

LAND CORNER RECORDATION CERTIFICATE

Filing Requirement of Act 74, Mich. PA 1970

For Corners In: _____ Located In _____ Corner Code # _____
 Wexford _____
 (County)

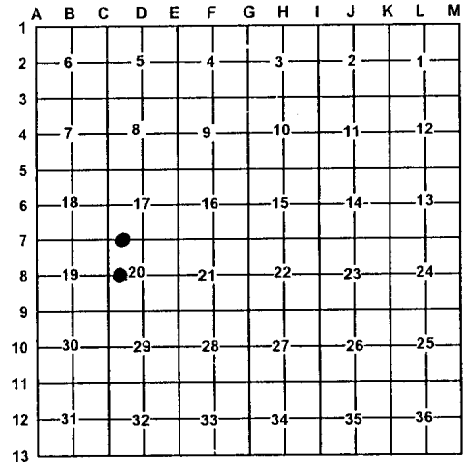
1. Public Land Survey		T _____		R _____					
		T _____		R _____					
2. Property Controlling in Section	S 20	T 24N	R 12W						EWV1/256
	S 20	T 24N	R 12W						CEVV 1/256
3. Miscellaneous Property in Section	S _____	T _____	R _____						
	S _____	T _____	R _____						

4. Lot No: _____ Recorded Plat: _____
 5. Private Claims: _____

I, Craig W. McVean, in a field survey on May 19, 2008 do hereby state that under requirements of PA 74, Michigan PA of 1970, the corner points mentioned in lines 1 and 2 above were in conformance with regulations and rules therefore as required in the current manual of survey instructions of the United States Department of the Interior, Bureau of Land Management or by a decree of a Court of Law and/or that the corner points mentioned in lines 3, 4 and 5 above were in conformance with the rules of the Michigan Board of Land Surveyors or by a Decree of a Court of Law; established, re-established, monumented, recovered, found as expressed below:

NOTE: Not more than 2 corners, all in the same town and range, may be recorded on this certificate.

Register of Deeds Stamp & File Number



A. Description of original monument and accessories and/or subsequent restoration:

EWV 1/256 Corner common to Sections 17 & 20.
 - 1977 - LCRC L. 3, p. 128 & DNR Project # 75-38 - C. F. Roser. Corner 'ZZZ' 333.61' W of W 1/16 between Sections 17 & 20 and 1000.84' E. of C-7. Established the NW corner of E 1/4 of NW 1/4 of NW 1/4 of Section 20, on north line of Section 20. S89°32'10"W 333.61' from W 1/16 on north line of section. Drove 1 1/4" x 21" rod (buried in rd.)
 1) P. P. N46°E 46.32'
 2) 30" Black Cherry S51°E 94.70'
 Fence South is 20' West.
 Set Cedar post with location tag 33' South

CEVV 1/256 Corner of Section 20 - None

B. Description of corner evidence found and/or method applied in restoring or re-establishing corner:

EWV 1/256 Corner common to Sections 17 & 20 - being the NW corner of the E 1/2 of the E 1/2 of the W 1/2 of the NW 1/4 of Sec. 20
 - Found 1 1/4" iron rod, down 0.8', in centerline of East-West gravel road. Found both witnesses per Carl F. Roser. 1 1/4" iron rod is accepted as best available evidence for the position of the corner.

CEVV 1/256 Corner of Section 20 - Being the SW corner of the E 1/2 of the E 1/2 of the W 1/2 of the NW 1/4 of Sec. 20 - Set 2" stamped Aluminum Cap on 5/8" x 34" rebar per Standard BLM procedure - Found old downed North-South fence 5.5'± West and old downed fence West 15'± North.

C. Description of monument for corner and accessories established to perpetuate locating the position of the corner:

EWV 1/256 Corner common to Sections 17 & 20 -
 A 1 1/4" iron rod
 S52°E 94.71' to found nail in SW side 36" Black Cherry (#2)
 N46°E 46.27' to found nail in SE side Power Pole (#1)
 S23°E 142.22' to set Nail & Tag in SW side 12" Red Pine
 South 33.01' to set 2" aluminum cap on 5/8" x 34" rebar
 online with Blue Carsonite Post with loc. tag

CEVV 1/256 Corner of Section 20 - Stamped 2" aluminum cap on 5/8" x 34" rebar
 S10°E 79.29' to set nail & tag on E. side 18" Sugar Maple
 S80°W 51.43' to set nail & tag on S. side 17" Sugar Maple
 N07°W 16.45' to set nail & tag on E. side triple 10" Sugar Maple
 N76°E 9.16' to set nail & tag in S. side 14" Sugar Maple
 Set Blue Carsonite Post with location tag 1' Southeast

Signed by: Craig W. McVean
 Surveyor's Michigan License No.: 39088

Date: 1/14/2009

