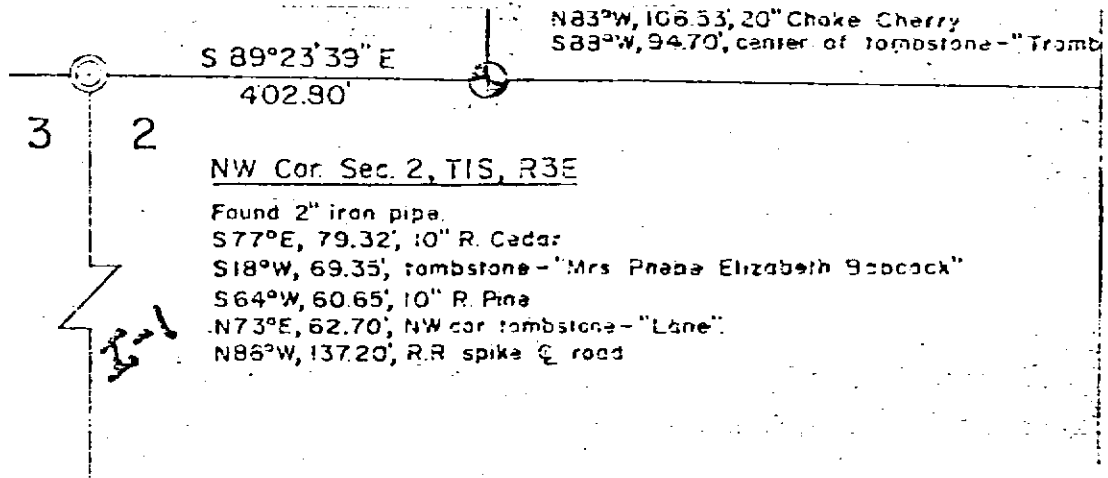


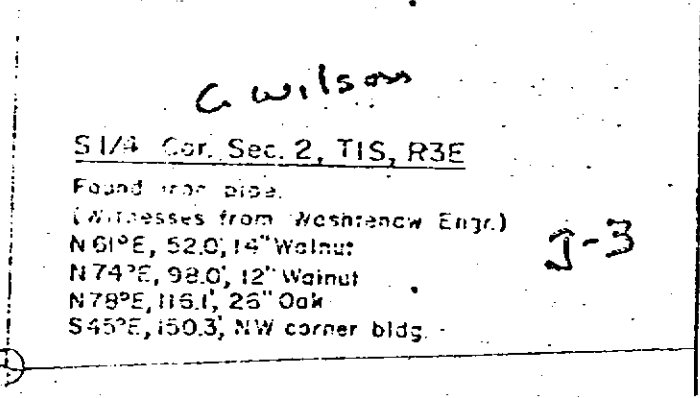
Washtenaw Co.



N83°W, 106.53, 20" Choke Cherry
 S83°W, 94.70, center of tombstone - "Tramb"
 S 89°23'39" E
 402.90'

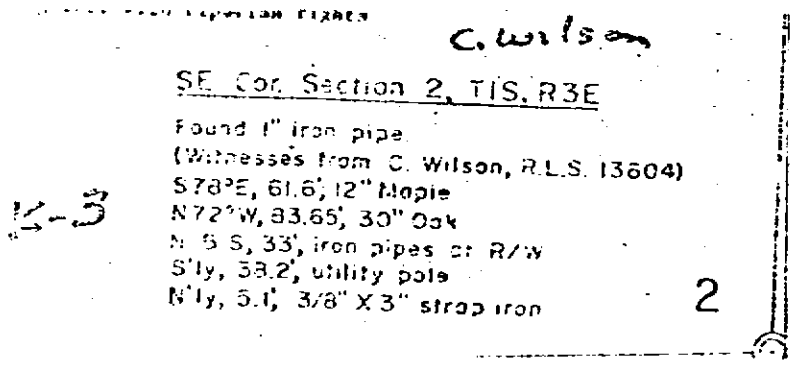
NW Cor. Sec. 2, T1S, R3E
 Found 2" iron pipe.
 S77°E, 79.32', 10" R. Cedar
 S18°W, 69.35', tombstone - "Mrs Phoebe Elizabeth Seacock"
 S64°W, 60.65', 10" R. Pine
 N73°E, 62.70', NW cor tombstone - "Lane"
 N86°W, 137.20', R.R. spike & road

3 2
 ⚡



C. Wilson
1/4 Cor. Sec. 2, T1S, R3E
 Found iron pipe.
 (Witnesses from Washtenaw Engr.)
 N61°E, 52.0, 14" Walnut
 N74°E, 98.0, 12" Walnut
 N78°E, 116.1, 26" Oak
 S45°E, 150.3, NW corner bldg.

1-3



C. Wilson
SE Cor. Section 2, T1S, R3E
 Found 1" iron pipe.
 (Witnesses from C. Wilson, R.L.S. 13604)
 S78°E, 61.6, 12" Maple
 N72°W, 83.65, 30" Oak
 N S S, 33', iron pipes at R/W
 S'y, 38.2, utility pole
 N'y, 5.1, 3/8" X 3" strap iron

1-3

2