

17 23

T15, R3E

Witnesses to E cor. Sec. 33

- set by H. H. Atwell
- 9" B.O. S 26° E 24.2'
- 4" Hic. S 66° W 51.4'
- 10" B.O. N 30.2'
- 14" B.O. N 69.5'
- 12" B.O. N 67° E 41.2'

Iron pipe

Only witnesses left were 2

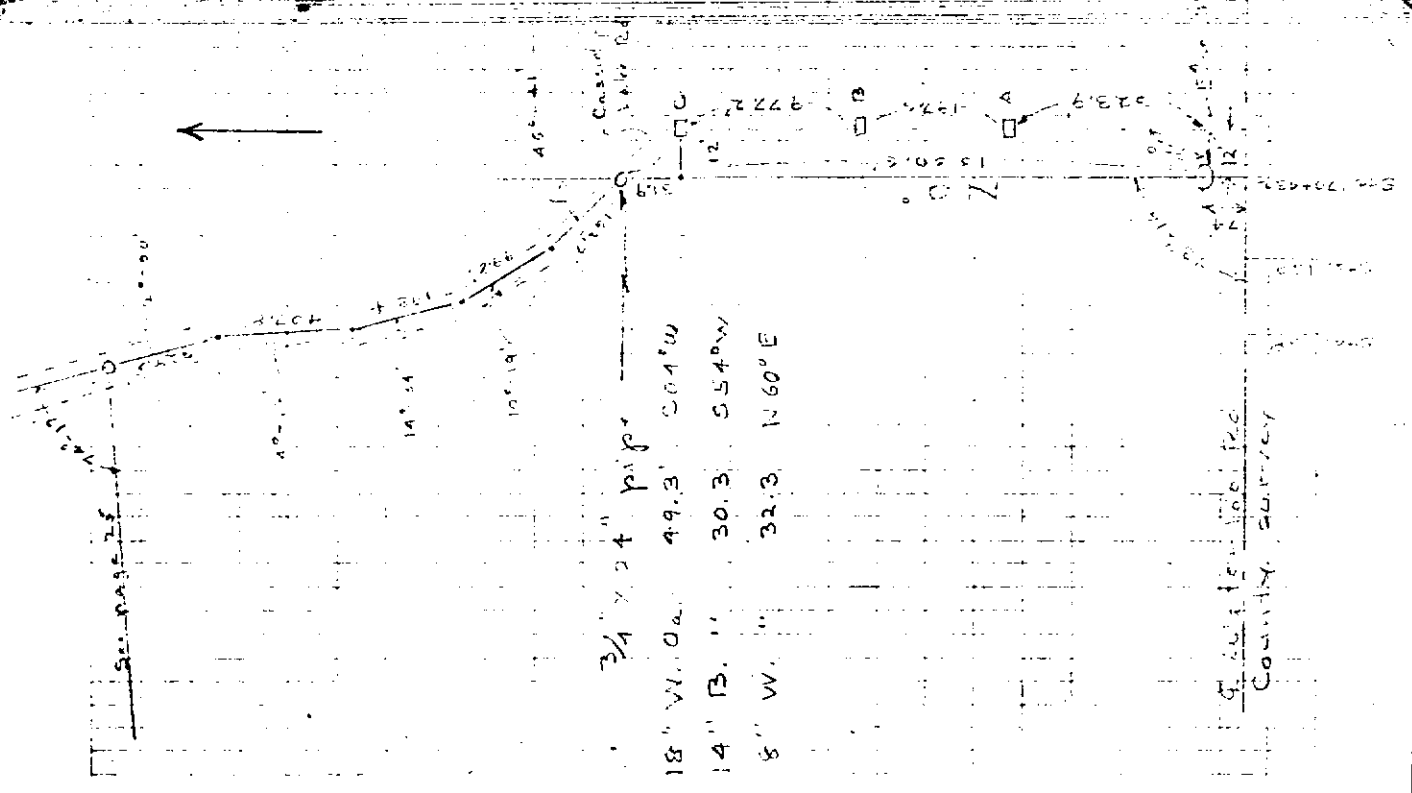
B.O. N. Dug but could not find pipe. Set wooden stakes monument w/ stones, from existing witnesses.

- 22" B.O. N 02° E 20.1'
- 24" B.O. N 02° E 69.5'
- 16" R.O. S 10° W 34.6'

Ran north from 1/4 corner on 12' off set to East to stake C then set back 12' to west and set pipe in \perp of Cassidy Lake

Red. See page 24

From WATER CO # 59



Station 100120
County Survey