

SECTION

LAND CORNER RECORDATION CERTIFICATE

Filing Requirement of Act 74, Mich. P.A. 1970

For Corners in

Form with fields for County (Washtenaw), Located In (T 1S R 4E), Corner Code # (G9), and numbered sections 1-5 for Public Land Survey, Property Controlling in Section, Miscellaneous Property in Sec., Lot No., and Private Claim.



5094753 Page: 1 of 2 02/07/2000 02:55P L-3 P-28

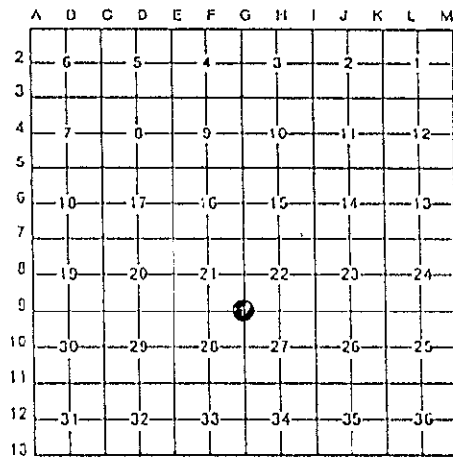
Register of Deeds Stamp & File Number

I, R. Timothy Tietsema, in a field survey on 8 February, 19 99, do hereby certify that under requirements of P.A. 74, Michigan P.A. of 1970, the corner points mentioned in lines 1 and 2 above were in conformance with regulations and rules therefore as required in the current manual of survey instructions of the United States Department of the Interior, Bureau of Land Management or by a decree of a Court of Law and/or that the corner points mentioned in lines 3, 4 and 5 above were in conformance with the rules of the Michigan Board of Land Surveyors or by a Decree of a Court of Law; established, re-established, monumented, re-monumented, recovered, found as expressed below:

NOTE: Not more than 4 corners, all in the same town and range, may be recorded on this certificate.

A. Description of original monument and accessories and/or subsequent restoration:

Table with columns for Date, Name, Location, Description, Monument Type, Direction, and Distance. Includes entries for 1825, 11/17/1934, 05/08/1971, 06/21/1983, and 06/27/1983.



Other Descriptions of the original monuments/accessories and subsequent restoration on reverse side of this document.

B. Description of corner evidence found and/or method applied in restoring or reestablishing corner:

Found 1 1/2" iron pipe with brick and stones, at road surface using accessories 3,4,5,6,7,8.

C. Description of monument for corner and accessories established to perpetuate locating the position of the corner:

Reset with 3/4" iron pipe and Washtenaw County Remonumentation Cap 0.5' below the gravel road surface with Michigan State Plane Coordinate values of North 317,303.30 and East 13,233,332.59. Accessories perpetuated or established as following:

Table with columns for Monument Type, Direction, Distance, and Description. Lists 8 different monuments with their respective directions and distances.

I find that this corner represents the best available evidence for the position of the original corner. This corner was ratified by the Washtenaw County Peer Committee on November 22, 1999

APPROVED DATE 11/22/99 CO. REP. [Signature]



NOV 22 1999

Signed by [Signature] Date _____ Surveyor's Michigan License No. 20712

01/29/1986	C. Wilson & Assoc. Job. No. 85188 A	Survey	Found 1 1/2" iron pipe	3)24" Burr Oak N01W 32.7' 4)24" Burr Oak N22E 18.5' 5)34" Burr Oak N86E 176.7' 6)50" Burr Oak N80W 137.3' 7)15" Oak S82W 91.4' 8)12" Ash S20E 15.5'
03/07/1987	C. Wilson & Assoc. Job. No. 87063	Survey	Found 1 1/2" iron pipe	3)24" Burr Oak N01W 32.7' 4)24" Burr Oak N22E 18.5' 5)34" Burr Oak N86E 176.7' 6)50" Burr Oak N80W 137.3' 7)15" Oak S82W 91.4' 8)12" Ash S20E 15.5'
12/31/1987	LSC Job No. 19287	Survey	Found 1 1/2" iron pipe	4)27" Burr Oak N22E 18.53' 5)39" Burr Oak N96E 176.78' 6)50" Burr Oak N80W 137.32' 9) Burr Oak S10E 19.20'
06/17/1988	C. Wilson & Assoc. Job. No. 88029	Survey	Found 1 1/2" iron pipe	3)24" Burr Oak N01W 32.7' 4)24" Burr Oak N22E 18.5' 5)34" Burr Oak N86E 176.7' 6)50" Burr Oak N80W 137.3' 7)15" Oak S82W 91.4' 8)12" Ash S20E 15.5'
05/07/1991	LSC Job No. 02891	Survey	Found	No accessories noted



5094753
Page: 2 of 2
02/07/2000 02:55P

Peggy M. Haines - Washtenaw Co. CORREM L-3 P-29

Copy -

RECEIVED
FEB 2000

SECTION

