

REF

SECTION

LAND CORNER RECORDATION CERTIFICATE

Filing Requirement of Act 74, Mich. P.A. 1970

SECTION

For Corners in

Washtenaw (County)

Located In:

Corner Code #

1. Public Land Survey

T 1S R 4E
T
T
T
T
S
S
S

G10



Peggy M. Haines - Washtenaw Co. CORREM L-3 P-30

Copy

5094754

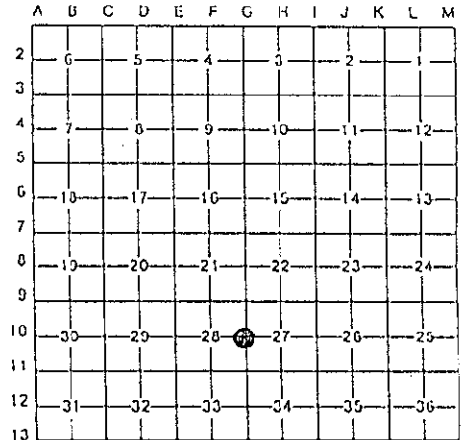
Page: 1 of 1
02/07/2000 02:55P

L-3 P-30

Register of Deeds Stamp & File Number

4. Lot No. Recorded Plat
5. Private Claim

I, R. Timothy Tietsema, in a field survey on 08 February, 19 99, do hereby certify that under requirements of P.A. 74, Michigan P.A. of 1970, the corner points mentioned in lines 1 and 2 above were in conformance with regulations and rules therefore as required in the current manual of survey instructions of the United States Department of the Interior, Bureau of Land Management or by a decree of a Court of Law and/or that the corner points mentioned in lines 3, 4 and 5 above were in conformance with the rules of the Michigan Board of Land Surveyors or by a Decree of a Court of Law; established, re-established, monumented, re-monumented, recovered, found as expressed below:



NOTE: Not more than 4 corners, all in the same town and range, may be recorded on this certificate.

A. Description of original monument and accessories and/or subsequent restoration:

Table with columns for Date, Name, Description, Monument, Direction, and Distance. Includes entries for J. Wampler (1825), W.J. Armstrong (11/20/1934), Norman N. Fahrner (07/08/1971), Associated Eng. & Surveyors Inc. (12/07/1972), Washtenaw Eng. (04/25/1974), and C. Wilson & Assoc. (06/17/1988).

B. Description of corner evidence found and/or method applied in restoring or reestablishing corner:

Found 1 1/2" iron pipe with brick and stone using accessory 12 remaining.

APPROVED
DATE 11/22/99
CO. REP. [Signature]

C. Description of monument for corner and accessories established to perpetuate locating the position of the corner:

Set 1/2" iron rod with Washtenaw County Remonumentation Cap into existing 1 1/2" iron pipe 2 feet East and 0.5' North of fence corner, and 0.4 feet below ground surface with Michigan State Plane Coordinate values of North 314,658.01 and East 13,233,400. Perpetuated or established as following:

Table with columns for Monument, Direction, Distance, and Description. Includes entries for High Voltage Tower #12423, 10" Ash, R.R. Tie Fnc. Post, 8" Poplar, and 10" Poplar.



I find that this corner represents the best available evidence for the position of the original corner. This corner was ratified by the Washtenaw County Peer Committee on November 22, 1999.

Signed by [Signature] Date

NOV 22 1999

Surveyor's Michigan License No. 20712