

RFI

SECTION

LAND CORNER RECORDATION CERTIFICATE
Filing Requirement of Act 74, Mich. P.A. 1970

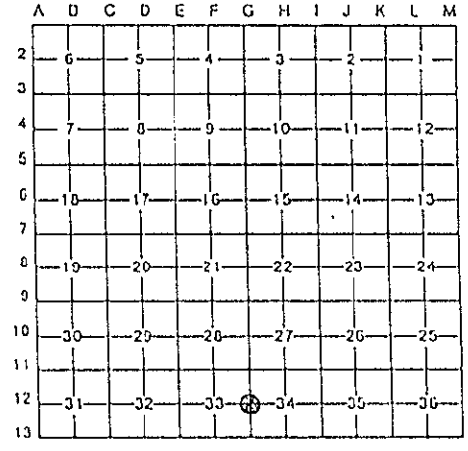
For Corners in

Washtenaw (County) Located In: Corner Code #
1. Public Land Survey T 1S R 4E
2. Property Controlling in Section S T R
3. Miscellaneous Property in Sec. S T R
4. Lot No. Recorded Plat
5. Private Claim

G12
Barcode
5094756
Page: 1 of 1
02/07/2000 02:55P
Peggy M. Haines - Washtenaw Co. CORREM L-3 P-33

Register of Deeds Stamp & File Number

R. Timothy Tietsema, in a field survey on 8 February, 19 99, do hereby certify that under requirements of P.A. 74, Michigan P.A. of 1970, the corner points mentioned in lines 1 and 2 above were in conformance with regulations and rules therefore as required in the current manual of survey instructions of the United States Department of the Interior, Bureau of Land Management or by a decree of a Court of Law and/or that the corner points mentioned in lines 3, 4 and 5 above were in conformance with the rules of the Michigan Board of Land Surveyors or by a Decree of a Court of Law; established, re-established, monumented, re-monumented, recovered, found as expressed below:



NOTE: Not more than 4 corners, all in the same town and range, may be recorded on this certificate.

A. Description of original monument and accessories and/or subsequent restoration:

Table with 5 columns: Date, Name, Survey/Reference, Description, and Monument Details. Includes entries for 1825 (J. Wampler), 1923 (H.H. Atwell), 10/06/1981 (Robert Macomber), and 09/15/1998 (C. Wilson & Assoc.).

B. Description of corner evidence found and/or method applied in restoring or reestablishing corner:

Found 3/4" iron pipe using accessories 3,5,8,9, and 10.

APPROVED
DATE 11/22/99
CO. REP. [Signature]

C. Description of monument for corner and accessories established to perpetuate locating the position of the corner:

Set Washtenaw County Remonumentation Cap on existing 3/4" iron pipe with Michigan State Plane Coordinate values of North 309,388.74 and East 13,233,590.44. Accessories perpetuated or established as follows:

- 3) 48" Oak North 10.32' Set P.K. Nail with Remonumentation Washer West side.
5) 30" Hickory North 44.22' Set P.K. Nail with Remonumentation Washer East side.
8) 8" Oak S80E 21.38' Set P.K. Nail with Remonumentation Washer North side.
9) 10" Oak S80W 11.81' Set P.K. Nail with Remonumentation Washer North side.
10) E-W Fence Line South 3'+/-

I find this corner represents the best available evidence for the position of the original corner. This corner ratified by the Washtenaw County Peer Committee on November 22, 1999.



Signed by [Signature] Date NOV 22 1999
Surveyor's Michigan License No. 20712