

MAR-09 1998

RECORDED
#ASHTENAW COUNTY, MI

SECTION

LAND CORNER RECORDATION CERTIFICATE
Filing Requirement of Act 74, Mich. P.A. 1970

JAN 22 8 31 AM '98

For corners in

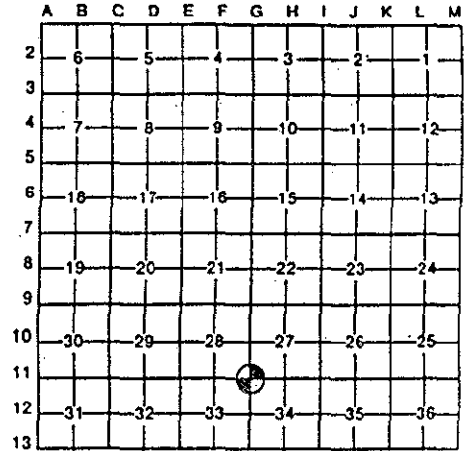
<u>WASHTENAW</u> (County)	Located In:	Corner Code #
	T1 S R 5 E	Webster Twp. G-11
1. Public Land Survey	T R	
	T R	
	T R	
2. Property Controlling in Section	S T R	
	S T R	
3. Miscellaneous Property in Sec.	S T R	
	S T R	

PEGGY K. HAINES
COUNTY CLERK/REGISTER

- COPY -
- COPY -

Liber 00002 Page 0029 RM
Register of Deeds Stamp & File Number

- 4. Lot No. _____, Recorded Plat _____
- 5. Private Claims _____



I, JOHN JEKABSON, in a field survey on 15 October, 1997, do hereby certify that under requirements of P.A. 74, Michigan P.A. of 1970, the corner points mentioned in lines 1 and 2 above were in conformance with regulations and rules therefore as required in the current manual of survey instructions of the United States Department of the Interior, Bureau of Land Management or by a decree of a Court of Law and/or that the corner points mentioned in lines 3, 4 and 5 above were in conformance with the rules of the Michigan Board of Land Surveyors or by a Decree of a Court of Law; established, re-established, monumented, re-monumented, recovered, found as expressed below:

NOTE: Not more than 4 corners, all in the same town and range, may be recorded on this certificate.

A. Description of original monument and accessories and/or subsequent restoration:

1819	G.L.O. - T. WAMPLER	SET POST	Sycamore, 22" Inn 7, 10"	N 02° E 16Lks S 67° E 12Lks	
1932, 13 June	WASHTENAW CO. ROAD COMMISSION W.J. ARMSTRONG #2444	Found an old wood stake below a group of stones. Reset with a 1 1/2" x 42" iron pipe and put stones and bricks around it.	16" Walnut 14" Hickory 16" Hickory 14" Hickory 3 R. of W. Pipes	N 19° E 78.95 N 33° E 35.35 S 40° W 53.05 S 63 1/2° W 54.85	1 2 3 4

SEE BACK OF THIS SHEET (NEXT PAGE)
FOR CONTINUATION OF SECTION "A"

B. Description of corner evidence found and/or method applied in restoring or reestablishing corner:

FOUND 1/2"x12" IRON PIPE 4" BELOW GRAVEL SURFACE. THIS PIPE WAS INSIDE OF A 1 1/2"x 42" IRON PIPE AT 12" BELOW THE GRAVEL SURFACE.

USING 4 WITNESSES FROM SECTION "A"



C. Description of monument for corner and accessories established to perpetuate locating the position of the corner:

SET 3/4" 24" IRON BAR WITH REMON TAG IN THE 1 1/2" IRON PIPE AT 6" BELOW GRAVEL SURFACE.	Nail in NE sd 10" Elm	N 30° W 47.63	8"
	PK & RT in NW sd 22" Shag. Hickory	N 35° E 35.35	2"
	PK & RT in SW sd 38" White Oak	S 45° E 21.50	5"
	PK & RT in W sd 24" White Oak	S 10° E 65.89	9"
	PK & RT in NW sd 26 Shag. Hickory	S 40° W 53.05	3"

APPROVED
DATE 11/16/97
CO. REP. KJ

Legend:
PK & RT = PK Nail & Washtenaw Co. Remon. Tag
* Indicates Previously Used

I conclude that after careful study of the record documentation and field observations, that this corner is a careful and faithful perpetuation of the position of the original corner.

Signed by [Signature] Date 4 December, 1997
Surveyor's Michigan License No. 19836

- COPY -

Liber 00002 Page 0030 RM

CONTINUATION OF SECTION 'A'

1997 WASHTENAW COUNTY REMONUMENTATION PROGRAM
WEBSTER, TOWNSHIP TOWN 1 SOUTH, RANGE 5 EAST
G-10: 1/4 CORNER COMMON TO SECTIONS 27 & 28)

History compiled by: I. John Jekabson P.S. # 19836
Roskelly, Jekabson & Assoc. P.C.

DATE	COMPANY SURVEYOR & P.S. #	JOB. #	P.A. # / L.C.R.C.	LOCATION OF SURVEY	MONUMENT DESCRIPTION	WITNESSES	BEARING & DISTANCE	ID #	COMMENT
1964 21 December	ATWELL-HICKS, INC.	22014			Found Iron Pipe	No Witnesses			
1973 18 April	WASHTENAW ENG. CO. NORMAN N. FAHRNER #17620	9888		N.E. 1/4 Sec. 28	Found 1 1/2" Iron Pipe	22" B. Walnut Group of 4 Hick. on one stump 22" Hickory 18" Oak 14" Hickory	N 32 1/2° W 59.2 N 72° E 25.0 S 15° E 74.7 S 25° W 62.5 N 72° E 17.0	1* 3*7 4* 7 8	
1983 18 April	WASHTENAW ENG. CO JOHN F. OLIVER #19840		Liber 2, Page 639		Found 1 1/2" Iron Pipe	Same as 18 April, 1973			
1980 26 March	WASHTENAW ENG. CO	17423		N.W. 1/4 Sec. 27	Found 1 1/2" Iron Pipe	Same as 18 April, 1973			
1980 22 April	T.L. SUTHERLAND #24620 WASHTENAW ENG. CO	17485		N.W. 1/4 Sec. 27	Found 1 1/2" Iron Pipe	Same as 18 April, 1973			
1981 March	T.L. SUTHERLAND #24620 LAND SURVEYING CONSULTANTS R. TIMOTHY TIETSEMA #20712	02691- 1S5E28		S.W. 1/4 Sec. 28	Fnd. 1 1/2" I.P.	24" Oak 24" Twin Oak 30" Oak 30" Walnut	N 55° E 16.95 S 35° E 49.78 S 40° W 61.42 N 40° W 59.40	8*7 9 7* 1*	
1986 5 April	ATWELL-HICKS, INC. TODD D. SHELLY #41111	42345		S.W. 1/4 Sec. 27	Found 1" Iron Pipe	Nail E face 24" Oak Nail N face 18" Oak Nail W face Twin 20" Oak Nail E face Twin 24" Hickory	N 30° W 59.38 N 60° E 16.85 S 08° E 49.70 S 35° W 62.82	1* 8*7 9* 10	

Legend:
• Indicates Previously Used