

MAY 15 2000

LAND CORNER RECORDATION CERTIFICATE
Filing Requirement of Act 74, Mich. P.A. 1970

SECTION

For corners in

WASHTENAW
(County)

Located In:

Corner Code #

Northfield Twp.
E - 9

- 1. Public Land Survey T 1 S R 6 E
T R
T R
T R
- 2. Property Controlling S T R
in Section S T R
- 3. Miscellaneous S T R
Property in Sec. S T R

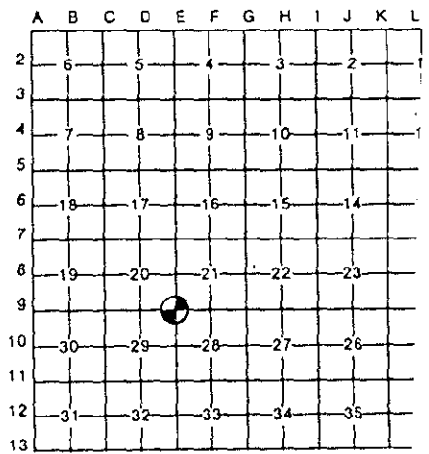


5094737
Page: 1 of 2
02/07/2000 02:55P
CORREM L-2 P-345

Peggy M. Haines - Washtenaw Co.

Register of Deeds Stamp & File Number

- 4. Lot No. _____, Recorded Plat _____
- 5. Private Claims _____



I, JOHN JEKABSON, in a field survey on 14 July, 1999, do hereby certify that under requirements of P.A. 74, Michigan P.A. of 1970, the corner points mentioned in lines 1 and 2 above were in conformance with regulations and rules therefore as required in the current manual of survey instructions of the United States Department of the Interior, Bureau of Land Management or by a decree of a Court of Law and/or that the corner points mentioned in lines 3, 4 and 5 above were in conformance with the rules of the Michigan Board of Land Surveyors or by a Decree of a Court of Law; established, re-established, monumented, re-monumented, recovered, found as expressed below:

NOTE: Not more than 4 corners, all in the same town and range, may be recorded on this certificate.

A. Description of original monument and accessories and/or subsequent restoration:

1819	G.L.O. - T. Wampler Deputy Surveyor	SET POST	White Oak, 5" White Oak, 25"	S 56°E 0.65Chs. N 31°W 0.65Chs.	
Date Unknown.	WASHTENAW CO. ROAD COMMISSION (Grid Book) H.H. Atwell	1 1/2"x36" Iron Pipe	Twin Elm 14" Hickory, 8" Elm, 13" Butternut, 12" Triple Hickory, 8" Top Massive Boulder	S 43°E 28.0 S 03°E 56.5 N 89°W 40.8 N 76°W 26.9 N 36 1/2°W 56.5 S 61°E 33.2	1 2 3 4 5 6

SEE BACK OF THIS SHEET (NEXT PAGE)
FOR CONTINUATION OF SECTION "A"

B. Description of corner evidence found and/or method applied in restoring or reestablishing corner:

FOUND 1"x18" IRON PIPE 3" ABOVE THE GROUND.
USING 4 WITNESSES FROM SECTION "A"



C. Description of monument for corner and accessories established to perpetuate locating the position of the corner:

SET 3/4"x24" IRON PIPE.	Mag & RT in SW sd 30" Ash	N 60°W	27.03	10°
SET A REMON CAP 4" ABOVE SURFACE.	Mag & RT in NE sd Tri 18" Shag Hickory	N 30°W	57.03	5°
	Mag & RT in NE sd Tw 12" Shag Hickory	S 60°E	16.10	11°
	Mag & RT in E sd 21" Shag Hickory	S 05°E	55.90	2°
	Center Dead Cherry	N 10°W	23.0	9°
	Center of 3 - 4 ft. diameter Boulder	S 60°E	34'	6°

Legend:
Mag & RT = Magnetized Nail & Washtenaw Co. Remon. Tag
* Indicates Previously Used

I conclude that after careful study of the record documentation and field observations, that this corner is accepted as the best available evidence of the position of the original corner

Signed by I. John Jekabson
Surveyor's Michigan License No. 19836

Date 22 November, 1999

FORM APPROVED BY MICHIGAN STATE BOARD OF LAND SURVEYORS
APPROVED
DATE 9/13/99
CO. RE. Kx

CONTINUATION OF SECTION "A"

1999 WASHTENAW COUNTY REMONUMENTATION PROGRAM
 NORTHFIELD TOWNSHIP TOWN 1 SOUTH, RANGE 6 EAST
 E-9 (SECTION CORNER COMMON TO SECTIONS 20,21,28, & 29)

History compiled by:
 I. John Jekabson P.S. # 19836
 Jekabson & Associates, P.C.

DATE	COMPANY SURVEYOR & P.S. #	JOB. #	P.A. 74 L.C.R.C.	LOCATION OF SURVEY	MONUMENT DESCRIPTION	WITNESSES	BEARING & DISTANCE	ID #	COMMENT
Unknown	WASHTENAW CO. ROAD COMM. (Grid Book) Hand written					9" Elm 15" Elm 7" W. Cherry 18" Ash	S 35°E 26.80 S 60°E 20.15 N 15°W 23.25 N 80°W 27.00	7 8 9 10	
1970, 16 Feb 1980, 16 May	ATWELL-HICKS, INC. WASHTENAW ENGINEERING CO., INC. NORMAN N. FAHRNER #17620	30202	Liber 6, Page 9	Section 28	No Indication Found 1" Iron Pipe	No Witnesses 20" Hickory Nail in 16" Tri Hickory Nail in 20" Hickory Nail in 16" W. Cherry Nail in 25" Ash	S 03°E 56.5 N 36°W 56.50 S 60°E 20.15 N 15°W 23.25 N 80°W 27.00	2" 5" 8" 9" 10"	
1980, 16 May	WASHTENAW ENGINEERING CO., INC. NORMAN N. FAHRNER #17620	17519		SW 1/4 Sec 21	Found 1" Iron Pipe	Same as above (Liber 6, Page 9)			

* Indicates Previously Used



Peggy M. Haines - Washtenaw Co. CORREM

5094737
 Page: 2 of 2
 02/07/2000 02:55P
 L-2 P-346

RECORDED
 SUBMITTAL

MAY 10 2000

SECTION