

LAND CORNER RECORDATION CERTIFICATE
Filing Requirement of Act 74, Mich. P.A. 1970

SECTION

For corners in

WASHTENAW (County)

Located In:

Corner Code ##

Northfield Twp. E-10

- 1. Public Land Survey T 1 S R 6 E
2. Property Controlling in Section S T R
3. Miscellaneous Property in Sec. S T R

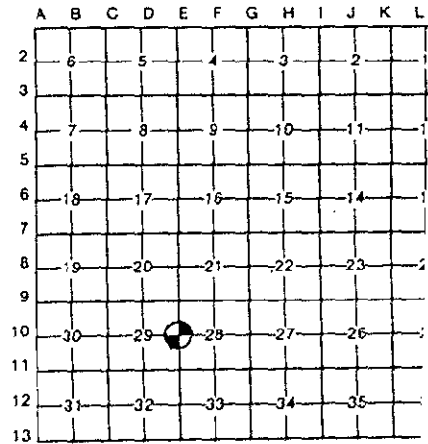


5094738
Page: 1 of 2
02/07/2000 02:55P

Peggy M. Haines - Washtenaw Co. CORREM L-2 P-347

Register of Deeds Stamp & File Number

- 4. Lot No. , Recorded Plat
5. Private Claims



I, JOHN JEKABSON, in a field survey on 19 July, 1999, do hereby certify that under requirements of P.A. 74, Michigan P.A. of 1970, the corner points mentioned in lines 1 and 2 above were in conformance with regulations and rules therefore as required in the current manual of survey instructions of the United States Department of the Interior, Bureau of Land Management or by a decree of a Court of Law and/or that the corner points mentioned in lines 3, 4 and 5 above were in conformance with the rules of the Michigan Board of Land Surveyors or by a Decree of a Court of Law; established, re-established, monumented, re-monumented, recovered, found as expressed below:

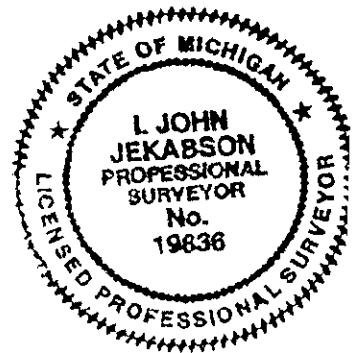
NOTE: Not more than 4 corners, all in the same town and range, may be recorded on this certificate.

A. Description of original monument and accessories and/or subsequent restoration:

Table with 5 columns: Description, Material, Size, Direction, Distance. Includes entries for 'White Oak, 11" North 7.57Chs.', '30" Silver Maple', '12" Elm', '36" Elm', '12" Elm', '14" Elm', '8" S.W. Oak', and 'False 1/4 Post'.

B. Description of corner evidence found and/or method applied in restoring or reestablishing corner:

FOUND 5/8" RE-BAR IN 1"X36" IRON PIPE
USING 6 WITNESSES FROM SECTION "A"



C. Description of monument for corner and accessories established to perpetuate locating the position of the corner:

Table with 4 columns: Description, Direction, Distance, Size. Includes entries for 'Red Maple', 'Silver Maple', 'Ash', 'Red Oak', 'Center of Large Stump', 'Shagbark Hickory', and 'Shagbark Hickory'.

Legend:
Mag & RT = Magnetized Nail & Washtenaw Co. Remon. Tag
\* Indicates Previously Used

I conclude that after careful study of the record documentation and field observations, that this corner is accepted as the best available evidence of the position of the original corner

Signed by [Signature] Date 22 November, 1999
Surveyor's Michigan License No. 19836

APPROVED DATE 9/13/99 CO. REC K2

CONTINUATION OF SECTION "A"

1999 WASHTENAW COUNTY REMONUMENTATION PROGRAM  
 NORTHFIELD TOWNSHIP TOWN 1 SOUTH, RANGE 6 EAST  
 E-10 (1/4 CORNER COMMON TO SECTIONS 28 & 29)

History compiled by:  
 I. John Jekabson P.S. # 19836  
 Jekabson & Associates, P.C.

DATE	COMPANY SURVEYOR & P.S. #	JOB. #	P.A. 74 L.C.R.C.	LOCATION OF SURVEY	MONUMENT DESCRIPTION	WITNESSES	BEARING & DISTANCE	ID #	COMMENT
1819	G.L.O. T. Wampler Deputy Surveyor				Set Post	White Oak, 1"	North 7.57Chs.		
1970, 16 Feb.	ATWELL-HICKS, INC.	30202	Liber 7, Page 266	Section 28	No Indication	No Witnesses	N 55°E 37.53	8	Found 1" Iron Pipe (1/4ft. Deep).
1991, 12 Mar.	ROSKELLY, JEKABSON & ASSOC., P.C. I. JOHN JEKABSON # 19836				Found 1" Iron Pipe (1/4ft. Deep). Set 5/8" Re-Rod at surface	Nail 15" Red Maple Nail 10" Pignut Hickory Nail 14" Ash Center Large Old Maple Stump Remnants of Fence Corner Nail 18" Red Oak Nail 12" Shag. Hickory Nail 12" Shag. Hickory 14" Oak Stump. Same as above (Liber 7, Page 266)	S 30°E 62.62 S 20°E 19.15 South 12.6 S 50°W 18' S 57°W 86.77 S 60°W 74.58 N 50°W 51.67 N 25°W 59.0	9 10 11 12 13 6*	Using 3 above witnesses Set 5/8" Re-Rod at surface
1991, 12 Feb.	ROSKELLY, JEKABSON & ASSOC., P.C. I. JOHN JEKABSON # 19836	91-1-30		Sec 28	Same as above	Same as above (Liber 7, Page 266)			
1991, 20 June	ROSKELLY, JEKABSON & ASSOC., P.C. I. JOHN JEKABSON # 19836	91-2-55		N 1/4 Sec 28	Same as above	Same as above (Liber 7, Page 266)			

\* Indicates Previously Used

Peggy M. Haines - Washtenaw Co. CORREM



5094738  
 Page: 2 of 2  
 02/07/2000 02:55P  
 L-2 P-348

*Copy*

RECORDED  
 JAN 10 2000  
 SECTION