

LAND CORNER RECORDATION CERTIFICATE
Filing Requirement of Act 74, Mich. P.A. 1970

SECTION

For corners in

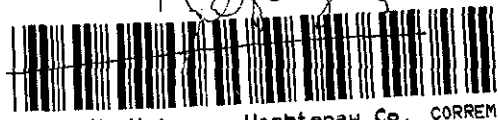
WASHTENAW
 (County)

Located In:

Corner Code #

Northfield Twp.
E-11

- 1. Public Land Survey T 1 S R 6 E
 T R
 T R
 T R
- 2. Property Controlling S T R
 in Section S T R
- 3. Miscellaneous S T R
 Property in Sec. S T R



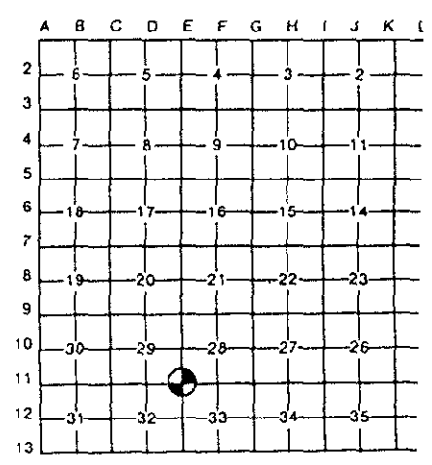
5094739
 Page: 1 of 2
 02/07/2000 02:55P

Register of Deeds Stamp & File Number

- 4. Lot No. _____, Recorded Plat _____
- 5. Private Claims _____

I, JOHN JEKABSON, in a field survey on 12 July, 1999, do hereby certify that under requirements of P.A. 74, Michigan P.A. of 1970, the corner points mentioned in lines 1 and 2 above were in conformance with regulations and rules therefore as required in the current manual of survey instructions of the United States Department of the Interior, Bureau of Land Management or by a decree of a Court of Law and/or that the corner points mentioned in lines 3, 4 and 5 above were in conformance with the rules of the Michigan Board of Land Surveyors or by a Decree of a Court of Law; established, re-established, monumented, re-monumented, recovered, found as expressed below:

NOTE: Not more than 4 corners, all in the same town and range, may be recorded on this certificate.



A. Description of original monument and accessories and/or subsequent restoration:

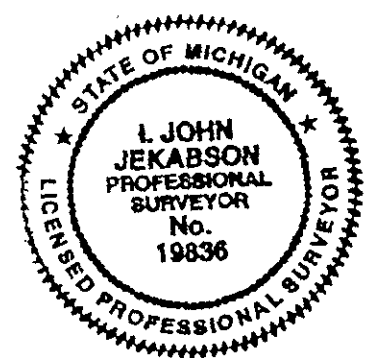
1819	G.L.O. - T. Wampler Deputy Surveyor	SET POST	White Oak, 5"	S 56°E 0.65Chs.		
			White Oak, 25	N 31°W 0.65Chs.		
1936, 17 Sept.	WASHTENAW CO. ROAD	FOUND IRON PIPE	Elm, 16"	N 76°E 20.4		1
COMMISSION	W.J. ARMSTRONG #2444		Elm, 18"	N 86°E 53.6		2
			Black Oak, 10"	S 35 1/2°E 39.3		3
			White Oak, 10"	S 03°E 35.6		4
			Maple, 18"	N 17°W 86.6		5

SEE BACK OF THIS SHEET (NEXT PAGE)
 FOR CONTINUATION OF SECTION "A"

B. Description of corner evidence found and/or method applied in restoring or reestablishing corner:

FOUND 1 1/2" IRON PIPE 4' NORTH OF NORTH EDGE OF GRAVEL OF NORTHFIELD-CHURCH ROAD.

USING 4 WITNESSES FROM SECTION "A"



C. Description of monument for corner and accessories established to perpetuate locating the position of the corner:

SET A 3/4"x24" IRON PIPE IN THE EXISTING 1 1/2" PIPE. SET REMON CAP 6" BELOW SURFACE.	Mag & RT in S sd Twin 13" Cherry	N 80°W 23.62	8"
	Mag & RT in S sd 12" Ash	N 80°E 38.63	10"
	Mag & RT in NE sd 24" Oak	S 30°E 40.06	3"
	Mag & RT in NW sd 40" Oak	S 80°W 124.85	11
	NE Corner of Stone Pillar	S 40°W 54.00	9"

Legend:
 Mag & RT = Magnetized Nail & Washtenaw Co. Remon. Tag
 * Indicates Previously Used

I conclude that after careful study of the record documentation and field observations, that this corner is accepted as the best available evidence of the position of the original corner

Signed by John Jekabson Date 22 November, 1999
 Surveyor's Michigan License No. 19836

FORM APPROVED BY MICHIGAN STATE BOARD OF LAND SURVEYORS, J
 REVISED 1
 REVISE

APPROVED
 DATE 9/13/99
 CO. REP. K

CONTINUATION OF SECTION "A"

1999 WASHTENAW COUNTY REMONUMENTATION PROGRAM
 NORTHFIELD TOWNSHIP TOWN 1 SOUTH, RANGE 6 EAST
 E-11 (SECTION CORNER COMMON TO SECTIONS 28, 29, 32, & 33)

I. John Jekabson P.S. # 19836
 Jekabson & Associates, P.C.

History compiled by:

DATE	COMPANY SURVEYOR & P.S. #	JOB. #	P.A. 74 L.C.R.C.	LOCATION OF SURVEY	MONUMENT DESCRIPTION	WITNESSES	BEARING & DISTANCE	ID #	COMMENT
Unknown	WASHTENAW CO. ROAD COMMISSION Grid Book (hand written)				1 1/2" Iron Pipe on North sh. road	15" Oak 10" Elm 11" Elm 21" Elm	S 40°E 39.75 West 34.20 S 49°W 57.33 N 80°E 20.02	3* 6 7 1*	
1963, Sept.	DETROIT EDISON COMPANY LARK CORRIDOR	EMS 894-15 30202		Sections 32, 33, 34, 35, & 36 Section 28	Iron	No Witnesses			
1970, 16 Feb.	ATWELL-HICKS, INC.				No Indication	No Witnesses			
1973	WASHTENAW CO. ROAD COMMISSION C.O. H.W.I. Grid Book (hand written)				No Indication	Nail in Triple 8" Cherry	N 75°W 23.78	8	
1984, 4 May	WASHTENAW ENGINEERING CO., INC. NORMAN N. FAHRNER #17620		Liber 7, Page 94		Found 1 1/2" Iron Pipe	Nail in 18" B. Oak Nail in 12" Tw. Cherry NE Cor. Stone Pillar Nail 5" Ash	S 35°E 39.3 N 85°W 23.78 S 40°W 54.02 N 85°E 38.46	3* 8* 9 10	

* Indicates Previously Used



Peggy M. Haines - Washtenaw Co. CORREM

5094739

Page: 2 of 2
 02/07/2000 02:55P

L-3 P-2

RECORDED

JAN 10 2000

SECTION