

SECTION

LAND CORNER RECORDATION CERTIFICATE

Filing Requirement of Act 74, Mich. P.A. 1970

For corners in

WASHTENAW County

Located In:

Corner Code #

Northfield Twp.

H-11

Copy

- 1. Public Land Survey T1S R 6E
2. Property Controlling in Section S T R
3. Miscellaneous Property in Sec. S T R

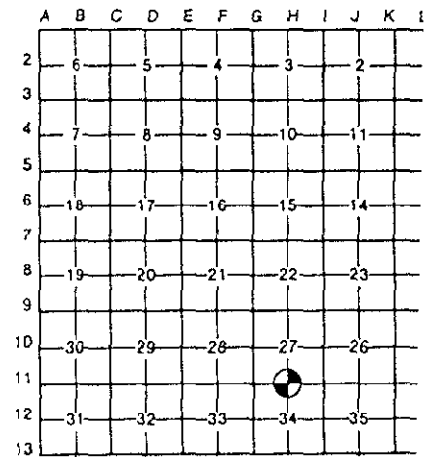


Page: 1 of 2 02/07/2000 02:55P

Peggy M. Haines - Washtenaw Co. CORREM L-3 P-24

Register of Deeds Stamp & File Number

- 4. Lot No. Recorded Plat
5. Private Claims



I, JOHN JEKABSON, in a field survey on 19 July, 1999, do hereby certify that under requirements of P.A. 74, Michigan P.A. of 1970, the corner points mentioned in lines 1 and 2 above were in conformance with regulations and rules therefore as required in the current manual of survey instructions of the United States Department of the Interior, Bureau of Land Management or by a decree of a Court of Law and/or that the corner points mentioned in lines 3, 4 and 5 above were in conformance with the rules of the Michigan Board of Land Surveyors or by a Decree of a Court of Law; established, re-established, monumented, re-monumented, recovered, found as expressed below:

NOTE: Not more than 4 corners, all in the same town and range, may be recorded on this certificate.

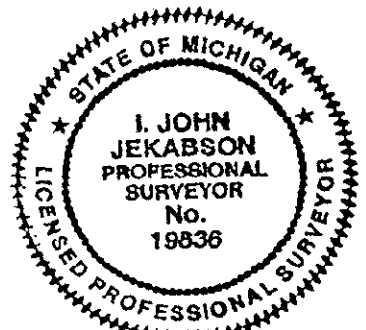
A. Description of original monument and accessories and/or subsequent restoration:

Table with 4 columns: Description, Material, Distance, and Station Number. Includes entries for 1819 G.L.O. - T. Wampler and 1936, 19 Mar. WASHTENAW CO. ROAD COMMISSION W.J. ARMSTRONG #2444.

SEE BACK OF THIS SHEET (NEXT PAGE) FOR CONTINUATION OF SECTION "A"

B. Description of corner evidence found and/or method applied in restoring or reestablishing corner:

FOUND A 2"X40" BENT IRON PIPE, SURROUNDED BY STONE AND BRICKS, 6" BELOW GRAVEL SURFACE OF NORTHFIELD CHURCH ROAD. SET 5/8"X24" RE-BAR IN A 1"X24" IRON PIPE. SET REMON CAP 6" BELOW GRAVEL SURFACE. USING 4 WITNESSES FROM SECTION "A"



C. Description of monument for corner and accessories established to perpetuate locating the position of the corner:

Table with 4 columns: Description, Material, Distance, and Station Number. Includes entries for SET 5/8"X24" RE-BAR IN A 1"X24" IRON PIPE.

Legend: Mag & RT = Magnetized Nail & Washtenaw Co. Remon. Tag \* Indicates Previously Used

I conclude that after careful study of the record documentation and field observations, that this corner is a careful and faithful perpetuation of the position of the original corner.

Signed by [Signature] Date 26 November, 1999
Surveyor's Michigan License No. 19836

APPROVED DATE 9/13/99 CO. REP. K2

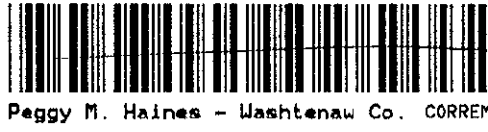
CONTINUATION OF SECTION "A"

1999 WASHTENAW COUNTY REMONUMENTATION PROGRAM  
NORTHFIELD TOWNSHIP TOWN 1 SOUTH, RANGE 6 EAST  
H-11 (1/4 CORNER COMMON TO SECTIONS 27 & 34)

History compiled by:  
I. John Jekabson P.S. # 19836  
Jekabson & Associates, P.C.

DATE	COMPANY SURVEYOR & P.S. #	JOB. #	P.A. 74 L.C.R.C.	LOCATION OF SURVEY	MONUMENT DESCRIPTION	WITNESSES	BEARING & DISTANCE	ID #	COMMENT
1975, 20 Nov.	ATWELL-HICKS, INC. ROBERT J. JAGOW #6998		Liber 4, Page 69		Found 2" Iron Pipe (mushroomed)	24" Shag Hickory 4" Shag Hickory 24" Stump 14" Walnut Iron Pipe	S 03°W 50.6 N 04°W 33.0 N 05°E 42.7 N 78°W 82.8 North 33.0 South 33.0	4" 9 1" 10 11 12	Found 2" Iron Pipe (mushroomed) Found 2 witnesses and 1 stump.
1975, 21 Nov.	ATWELL-HICKS, INC. ROBERT J. JAGOW #6998	28254		NE 1/4 Sec 27	Found 2" Iron Pipe	Same as 1975, 21 Nov. (A-H)			
1984, 5 May	ROSKELLY JEKABSON & ASSOC., P.C. I. JOHN JEKABSON # 19836	84-4-67		NW 1/4 Sec 34	Found 2" Iron Pipe	Nail in Utility Pole. Nail 24" Hickory Nail 18" Bl. Walnut Nail 8" Hickory	N 05°E 25.85 S 03°W 50.60 N 78°W 82.80 N 04°W 33.00	13 4" 10" 9"	

\* Indicates Previously Used



Peggy M. Haines - Washtenaw Co. CORREM

5094751  
Page: 2 of 2  
02/07/2000 02:55P  
L-3 P-25

- Copy -

SECTION