

APPROVED

DATE 10-28-96

CO. REP. KA

LAND CORNER RECORDATION CERTIFICATE
Filing Requirement of Act 74, Mich. P.A. 1970

For corners in

WASHTENAW (County)

Located In:

Corner Code #

Table with 3 columns: Item description, Survey/Section info, and Corner Code #. Includes items like Public Land Survey, Property Controlling in Section, and Miscellaneous Property in Sec.

- 4. Lot No.
5. Private Claims

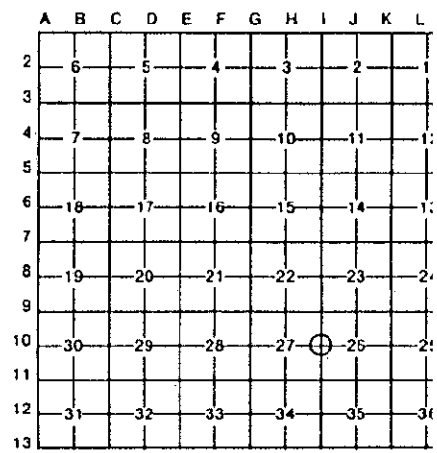
RECORDED
WASHTENAW COUNTY, MI
FEB 18 9 22 AM '97
PEGGY M. JAINES
COUNTY CLERK/REGISTRAR

Liber 00001 Page 0671R

Register of Deeds Stamp & File Number

I, JOHN JEKABSON, in a field survey on 21 August, 1996, do hereby certify that under requirements of P.A. 74, Michigan P.A. of 1970, the corner points mentioned in lines 1 and 2 above were in conformance with regulations and rules therefore as required in the current manual of survey instructions of the United States Department of the Interior, Bureau of Land Management or by a decree of a Court of Law and/or that the corner points mentioned in lines 3, 4 and 5 above were in conformance with the rules of the Michigan Board of Land Surveyors or by a Decree of a Court of Law; established, re-established, monumented, re-monumented, recovered, found as expressed below:

NOTE: Not more than 4 corners, all in the same town and range, may be recorded on this certificate.



A. Description of original monument and accessories and/or subsequent restoration:

1819 G.L.O. - SET POST
T. WAMPLER

Table listing monuments and their bearings/distances: Cottonwood, 20" N 51° W 289.0; Apple, 10" S 55° W 229.0; Sw Oak 8", to nail S'Ely 44.5; Maple 14", to nail S'Ely 69.2; Maple 16", to nail S'Wly 65.3; Tw. Ash 24", to nail W'ly 33.65; Elm 8" N'Ely 33.1; Elm 8" N'Ely 30.5.

B. Description of corner evidence found and/or method applied in restoring or reestablishing corner:

FOUND 1/2" X 9" IRON PIPE (CAP W.C.R.C. #13028) IN MON. BOX IN ASPHALT SURFACE OF SUTTON ROAD. FOUND BOAT SPIKE BELOW THE IRON PIPE.

USING 11 WITNESSES FROM SECTION "A"

SURVEY &
REMONUMENTATION

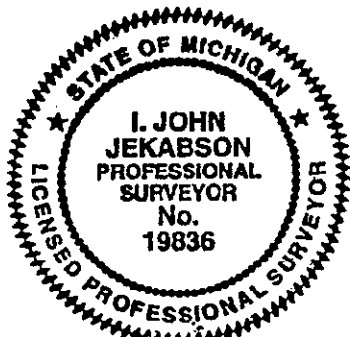
MAY 05 1997

COMMISSION

COPY

C. Description of monument for corner and accessories established to perpetuate locating the position of the corner:

Table listing monuments and their bearings/distances: Nail in N sd 10" Elm N 70° W 21.37 19°; PK in West End of C.M.P. N 55° W 28.66 17°; East End of C.M.P. N 65° E 27.9 16°; PK & RT in W sd 26" White Oak N 20° W 69.31 22°; Nail in E sd 25" Ash N 18° W 59.02 14°; PK & RT in NW sd Twin 23" Ash N 42° E 63.14 18°; PK & RT in N sd 30" White Oak S 85° E 40.54 12°; Nail in W sd 9" Elm S 25° E 33.00 20°; Nail in E sd 25" Maple S 23° W 91.20 13°; Nail in SE sd Stump S 27° W 65.30 5°; PK & RT in S sd 12" Ash S 85° W 48.94 21°; Center of Stump S 87° W 33.6 6°



I conclude that after careful study of the record documentation and field observations, that this corner is accepted as the best available evidence of the position of the original corner.

Signed by [Signature] Date 11 NOVEMBER, 1996

Surveyor's Michigan License No. 19836

1996 WASHIENAW COUNTY REMONUMENTATION PROGRAM
NORTHFIELD TOWNSHIP TOWN 1 SOUTH, RANGE 6 EAST
1-10 (1/4 CORNER COMMON TO SECTIONS 26 & 27)

History compiled by:

1. John Jekabson P.S. # 19836
Roskelly, Jekabson & Assoc. P.C.

DATE	COMPANY SURVEYOR & P.S. #	JOB #	P.A. 74 L.C.R.C.	LOCATION OF SURVEY	MONUMENT DESCRIPTION	WITNESSES	BEARING & DISTANCE	ID #	COMMENT
1971	ATWELL-HICKS, INC. ROBERT J. JAGOW #6998		Liber 1 Page 253	NE 1/4 Section 27	Found Bolt	1 1/2" Iron Pipe with 6998 yellow plug Triple Juniper	N 20° E 25.3 N 10° E 43.0 S 80° E 18.0	9 10 11	
1974	ROSKELLY, JEKABSON & ASSOC., P.C. ROBERT P. ROSKELLY # 18663	74-6-68		NE 1/4 Section 27	Found Bolt	Nail in 30" White Oak Nail in 18" Maple Nail in 18" Maple Nail in 20" Ash	S 85° E 40.55 S 20° E 69.00 S 15° W 91.25 NWly 58.80	12 4* 13 14	
1976	ATWELL-HICKS, INC. ROBERT J. JAGOW #6998	29234		NE 1/4 Section 27	Boat Spike in Bituminous Rd.	22" Oak 26" Twin Cottonwood 28" Oak E-End 24" C.M.P. W-End 24" C.M.P.	N 30° W 58.8 N 20° W 99.8 S 80° E 40.5 N 65° E 27.9 N 65° W 28.9	14* 15 12* 16 17	Found 3/4" rod and pieces of brick from 3 remaining accessories. Raised to road surface with 3/4 x 9" iron pipe in monument box, over 3/4" rod.
1983	WASHIENAW CO. ROAD COMMISSION ROBERT A. CAMPBELL #13928		Liber 6 Page 294		3/4 x 9" Iron Pipe in Mon. Box	17" Maple 27" Stump 28" Dead Tw. Ash 29" Oak, set nail S. side 22" Ash, set nail E. side W. end 18" C.M.P., set nail on top 22" Tw. Ash, set nail S. (junk) S sd.	S 27° W 66.3 S 87° W 33.6 S 79° E 40.79 N 20° W 59.02 N 57° W 28.65 N 40° E 63.50	4* 5* 6* 12* 14* 17*	
1988	KOSTECKE & ASSOC. INC. RAYMOND J. KOSTECKE #12584	88-6000		SW 1/4 Section 26	Fd. Pipe	Spike N.E. side of 18" Oak Spike N.E. side of 12" Elm Spike S.W. side of 12" Elm	N.W. 59.08 W. 21.36 S.E. 32.98	14* 19 20	
1988	ROSKELLY, JEKABSON & ASSOC., P.C. L. JOHN JEKABSON #19836	74-6-68		NE 1/4 Section 27	FIP Mon. Box (notes)	Nail in Twin 20" Ash Nail in 30" White Oak Nail in 12" Ash	N 35° E 63.10 S 85° E 40.55 S 85° W 48.94	18* 12* 21	
1991	BOSS ENGINEERING CO. GARY BOSS # 17022	90586-B		NW 1/4 Section 26	WCRC capped iron in Mon. Box	Nail in 24" Ash Nail N/S 8" Elm Nail N/E/S 24" tree Nail NW/S 26" tree Nail N/S 30" Oak	N 30° W 58.80 N 85° W 21.35 N 25° W 59.04 N 40° E 63.09 S 85° E 40.50	19* 14* 18* 12*	
1991	BOSS ENGINEERING CO. GARY BOSS # 17022	91038		NW 1/4 Section 26	WCRC capped iron in Mon. Box	Nail SW/S 8" Elm	S 40° E 33.00	20*	
1992	KOSTECKE & ASSOC. INC. RAYMOND J. KOSTECKE #12584	92-6905		SE 1/4 Section 27	Fd. Pipe	Same as 15-98, 21 October			

* INDICATES PREVIOUSLY USED

Liber 000001 Page 0672 RM