

**REMONUMENTATION  
LAND CORNER RECORDATION CERTIFICATE**  
Filing Requirement of Act 74, Mich. P.A. 1970

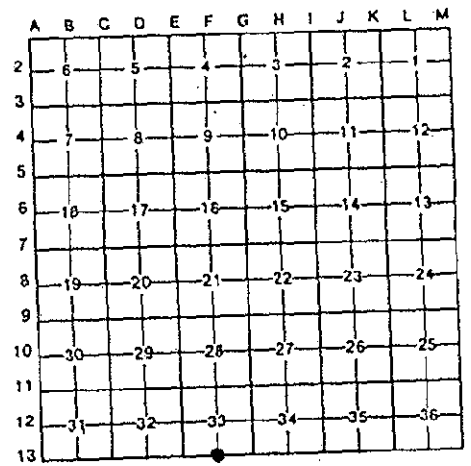
RECORDED  
WASHTENAW COUNTY, MI  
FEB 18 8 55 AM '97  
PEERY M. JAMES  
COUNTY CLERK/REGISTRAR

For corners in <u>Washtenaw</u> (county)	Located In	Corner Code #
1. Public Land Survey	T <u>2S</u>	R <u>6E</u> F-13
	T _____	R _____
	T _____	R _____
	T _____	R _____
2. Property Controlling S _____ in Section	T _____	R _____
	S _____	R _____
3. Miscellaneous S _____ Property in Sec.	T _____	R _____
	S _____	R _____
4. Lot No. _____, Recorded Plat _____		
5. Private Claims _____		

Liber 00001 Page 05652m

Register of Deeds Stamp & File Number

I, R.T. Tietsema, in a field survey on September 30 19 96, do hereby certify that under the requirements of P.A. 74, Michigan P.A. of 1970, the corner points mentioned in lines 1 and 2 above were in conformance with the regulations and rules therefore as required in the current manual of survey instructions of the United States Department of the Interior, Bureau of Land Management of by a decree of a Court of Law and/or that the corner points mentioned in lines 3, 4, and 5 above were in conformance with the rules of the Michigan Board of Land Surveyors or by a Decree of a Court of Law; established, re-established, monumented, recovered, found as expressed below.



NOTE: Not more than 4 corners, all in the same town and range, may be recorded on this certificate

**A. Description of original monument and accessories and/or restoration:**

Set South Corner of Section 33. 1817      GLO	Fld. Notes	Set Original Corner	1) 6" Ash 2) 36" W. Oak	S71W N19E	21 links (13.86') 24 links (15.84')
--	------------	---------------------	----------------------------	--------------	--

**B. Description of corner evidence found and/or method applied in restoring or reestablishing corner:**

LSC was unable to find any field evidence of corner.  
In October of 1996 LSC set a 1" Pipe half way between found corners E-13 and G-13, on a line extended (see sketch) from G-13 through F-1 (SEC. 4 T3S, R6E). Distance determined from field observation (5278.03) and from A-H Survey Sketch for Woodbury Gardens (5278.15) dated February 1924. Bearing reference from Assessor's Plat No. 54 (L18, PG3), and set five (5) additional witnesses.

**C. Description of monument for corner and accessories established to perpetuate locating the position of the corner:**

- Set 1" Iron Pipe and five (5) Witnesses.
- 3) 14" Spruce      S35E      5.24' to nail & R.T.
- 4) 12" Tri-Cherry      N80E      32.96' to nail & R.T.
- 5) 10" Spruce      S80E      33.94' to nail & R.T.
- 6) SE Corner of Brick      S63W      7.39' to nail & R.T.  
House, #1446.
- 7) NW Corner Conc.      S40E      10.12' to nail & R.T.  
Transformer pad, # 3116-1

It is our opinion that this corner represents a careful and faithful reestablishment of the position of the original corner.

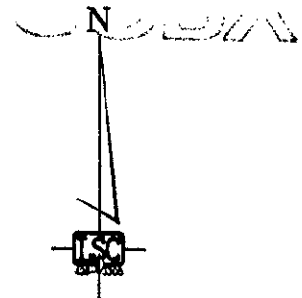
SURVEY &  
REMONUMENTATION  
MAY 05 1997  
COMMISSION

Signed by [Signature] Date DEC 19 1996  
Surveyor's Michigan License No. 20712

FORM APPROVED BY MICHIGAN STATE BOARD OF LAND SURVEYORS, JAN. 28 1971  
REVISED MAY 14, 1975  
REVISED JAN., 1983

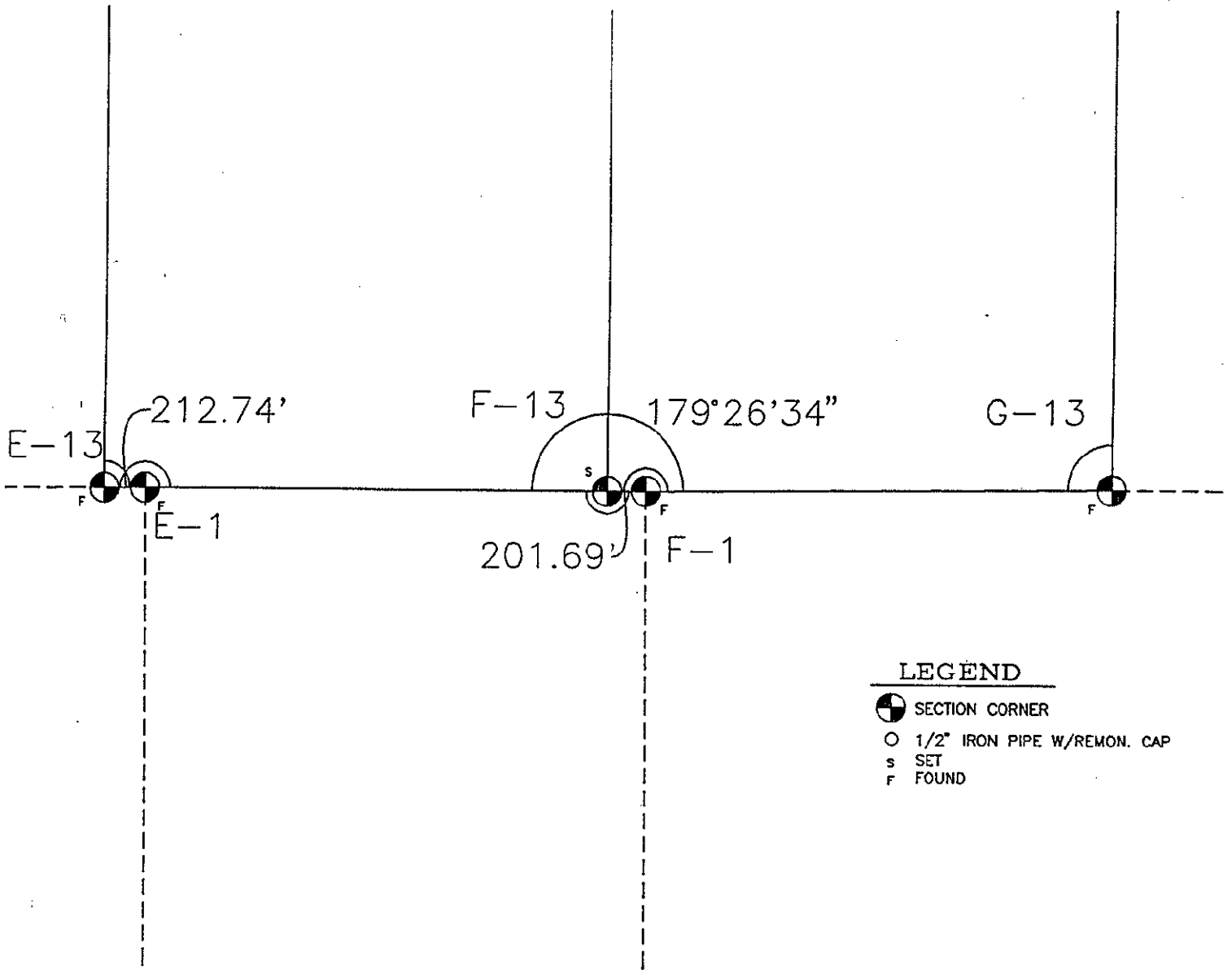
APPROVED  
DATE 11/11/96  
CO. PER. KE

COPY



SECTION 33  
T2S,R6E

SCALE  
0 800 FT.



SECTION 4  
T3S,R6E

LEGEND

- SECTION CORNER
- 1/2" IRON PIPE W/REMON. CAP
- SET
- FOUND

*Washtenaw County*  
*Remonumentation*  
*Section 33, Ann Arbor Township*  
*T2S, R6E (F-13)*

Client: Washtenaw County  
Job No:01196-3S3E36

SCALE: 1"=800

Fld. Bk: X  
Pg: X  
Drm. By: BBB  
Ckd. By: RTT

Date: Nov. 1996  
Issued:  
Sheet: 1 of 1

By:  
By: R. TIMOTHY TIETSEMA  
Professional Surveyor No. 20712



LAND SURVEYING CONSULTANTS

SURVEY ENGINEERING  
P.O. BOX 85, 3225 CENTRAL ST.  
DEXTER, MICHIGAN  
(313) 426-3305 (313) 761-5577