

**REMONUMENTATION
LAND CORNER RECORDATION CERTIFICATE**
Filing Requirement of Act 74, Mich. P.A. 1970

RECORDED
WASHTENAW COUNTY, MI
FEB 18 9 00 AM '97
PERI HAINES
COUNTY CLERK/REGISTER

For corners in <u>Washtenaw</u> (county)	Located In	Corner Code #
1. Public Land Survey	T <u>2S</u>	R <u>7E</u> I-12
	T _____	R _____
	T _____	R _____
	T _____	R _____
2. Property Controlling S	T _____	R _____
in Section	S <u>T</u>	R _____
3. Miscellaneous	S <u>T</u>	R _____
Property in Sec.	S <u>T</u>	R _____

Liber 00001 Page 0572RM
Register of Deeds Stamp & File Number

4. Lot No. _____, Recorded Plat _____
5. Private Claims _____

I, R.T. Tietsema, in a field survey on August 16 1996, do hereby certify that under the requirements of P.A.74, Michigan P.A. of 1970, the corner points mentioned in lines 1 and 2 above were in conformance with the regulations and rules therefore as required in the current manual of survey instructions of the United States Department of the Interior, Bureau of Land Management of by a decree of a Court of Law and/or that the corner points mentioned in lines 3, 4, and 5 above were in conformance with the rules of the Michigan Board of Land Surveyors or by a Decree of a Court of Law; established, re-established, monumented, recovered, found as expressed below.

A	B	C	D	E	F	G	H	I	J	K	L	M
2	6	5	4	3	2	1						
3												
4	7	8	9	10	11	12						
5												
6	18	17	16	15	14	13						
7												
8	19	20	21	22	23	24						
9												
10	30	29	28	27	26	25						
11												
12	31	32	33	34	35	36						
13												

NOTE: Not more than 4 corners, all in the same town and range, may be recorded on this certificate

A. Description of original monument and accessories and/or restoration:

Set Corner of Sections 34 & 35. 1819	GLO (Wampler)	Fld. Notes	Set Original Corner	1) 26" W. Oak S41W	22 links(14.52')
				2) 20" W. Oak N22E	11 links(7.26')
no date	H.H. Atwell	Resurvey (Grid Book)	Iron Pipe	3) 14" Hickory	S90E 109.26'
				4) 18" R. Oak	S15E 105.60'
				5) NE Cor. House	S41W 115.05'
				6) 14" H. Maple	S17W 118.80'
5/2/1968	(Atwell-Hicks)	Compiled Surveys File #242	Axle Shaft	3) 14" Hickory	East 109.20'
				4) 18" R. Oak	S15E 105.60'
				5) NE Cor. House	S41W 115.05'
				6) 14" H. Maple	S17W 118.80'
				7) Rd. Fence	S90E 31.50'
				8) W Rd. Fence South	S90W 17.90'
				9) W Rd. Fence North	S90W 32.10'

B. Description of corner evidence found and/or method applied in restoring or reestablishing corner:

In August of 1996 LSC computed the location of the corner to be inside a house by using a recorded angle from the "Geddes Ridge Sub." (L21-PG75 W.C.R.) and distance by comparing LSC's measurement from I-11 to I-13 to 1968 measurements and computed the corner's position accordingly (see sketch), set two (2) reference irons and three (3) witnesses for the N'y reference iron and four (4) for the S'y reference iron.

C. Description of monument for corner and accessories established to perpetuate locating the position of the corner:

Set two (2) 1" Pipes and Remonumentation caps as reference irons.

10) N Reference Iron	N0°51'35"E	19.49' with remon cap
11) House Corner	N8E	47.49'
12) House Corner	S45W	5.28'
13) House Corner	S12W	27.26'
14) S Reference Iron	S0°47'26"E	30.51' with remon cap
15) House Corner	S89E	26.94'
16) House Corner	N70W	7.50'
17) House Corner	S37E	38.44'
18) House Corner	S23W	25.90'

SURVEY &
REMONUMENTATION

MAY 05 1997

ADMISSION

It is our opinion that this represents a careful and faithful reestablishment of the position of the original corner.

Signed by R. T. Tietsema Date DEC 02 1996
Surveyor's Michigan License No. 20712

FORM APPROVED BY MICHIGAN STATE BOARD OF LAND SURVEYORS, JAN. 28 1971
REVISED MAY 14, 1975
REVISED JAN., 1983

APPROVED
DATE 11/11/96
CO. REC ka

RECORDED
T. TIETSEMA
10. 20712

SKETCH

26/8/97 2:37AM 886 8333003 886 9.00
 MSIC
 26/8/97 2:37AM 886 8333003 886 2.00
 SRF

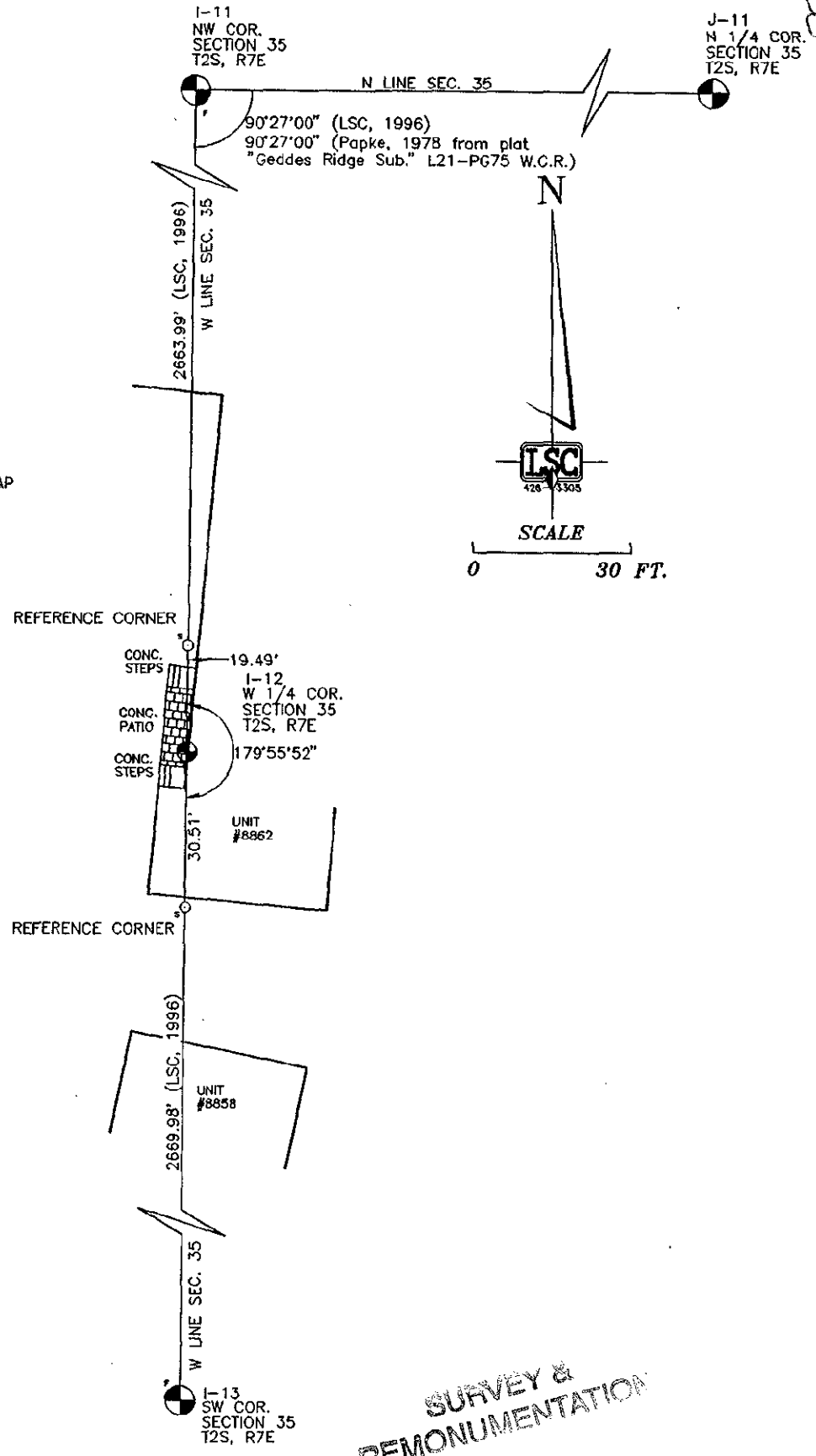
LEGEND

- SECTION CORNER
- 1" IRON PIPE W/REMON. CAP
- SET
- FOUND

RECORDED
 WASHTENAW COUNTY, MI

FEB 18 9 00 AM '97

REG. & MAINES
 COUNTY CLERK/REGISTER



SURVEY &
 REMONUMENTATION
 MAY 05 1997
 COMMISSION

<p>SKETCH W 1/4 CORNER SEC. 35 (I-12) T2S, R7E SUPERIOR TWP. WASHTENAW COUNTY, MI</p>	<p>SCALE: 1" = 30' Fld. Bk: X Pg: X Drn. By: BBB Ckd. By: RTT</p>	<p>R. TIMOTHY TIETSEMA Professional Land Surveyor No. 20712 LSC LAND SURVEYING CONSULTANTS</p>
<p>Client: WASHTENAW COUNTY Job No: 01196</p>	<p>Date: OCT. 1996 Issued: Sheet: X of X</p>	<p>LSC SURVEY ENGINEERING P.O. BOX 65, 3225 CENTRAL ST. DEXTER, MICHIGAN (313) 426-3305 (313) 761-5577</p>