

**REMONUMENTATION
LAND CORNER RECORDATION CERTIFICATE**
Filing Requirement of Act 74, Mich. P.A. 1970

RECORDED
 WASHTEWAW COUNTY, MI
 FEB 18 9 01 AM '97
 PEGGY M. HAINES
 COUNTY CLERK/REGISTRAR

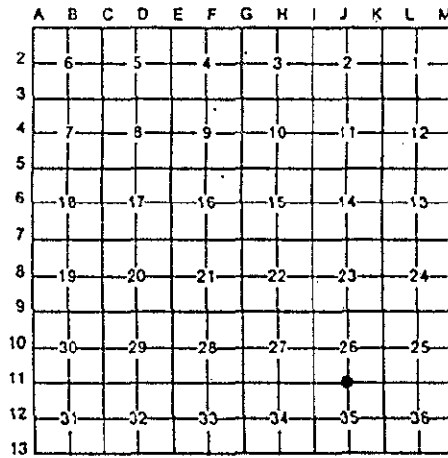
For corners in <u>Washtenaw</u> (county)	Located In	Corner Code #
1. Public Land Survey	T <u>2S</u> T _____ T _____ T _____	R <u>7E</u> R _____ R _____ R _____
2. Property Controlling S in Section	S <u>T</u> S _____	R _____ R _____
3. Miscellaneous Property in Sec.	S <u>T</u> S _____	R _____ R _____

Liber 00001 Page 05742m

Register of Deeds Stamp & File Number

4. Lot No. _____, Recorded Plat _____
5. Private Claims _____

I, R.T. Tietsema, in a field survey on July 30, 19 96, do hereby certify that under the requirements of P.A.74, Michigan P.A. of 1970, the corner points mentioned in lines 1 and 2 above were in conformance with the regulations and rules therefore as required in the current manual of survey instructions of the United States Department of the Interior, Bureau of Land Management or by a decree of a Court of Law and/or that the corner points mentioned in lines 3, 4, and 5 above were in conformance with the rules of the Michigan Board of Land Surveyors or by a Decree of a Court of Law; established, re-established, monumented, recovered, found as expressed below.



NOTE: Not more than 4 corners, all in the same town and range, may be recorded on this certificate

A. Description of original monument and accessories and/or restoration:

Set post Corner of Sections 26, & 35 1819 GLO(Wrangler) Fld. Notes	Set Original Corner	1) 7" Beech 2) 12" Beech	N40E N67W	7 1/2 Links(4.95') 14 Links(9.24')
8/15/1939 W.J.Armstrong Resurvey Fld Notes	Unrecorded	3) SE Cor. of Culv. H'dwl. 4) SW Cor. W. Culv. H'dwl 5) Twin 4" B. Walnut		S3 1/2W 15.8' S49W 24.5' S75W 119.6'

(continued on back)

B Description of corner evidence found and/or method applied in restoring or reestablishing corner

Found 2" Pipe 2.7' South of the centerline of Geddes road, 0.3' below bit. surface in line with Nly fence line 85.0' East. of Arbor Woods entrance. No Witnesses were found.

C Description of monument for corner and accessories established to perpetuate locating the position of the corner:

Set 1" Pipe and Remonumentation Cap. Set additional accessories:	9) Utility Pole 10) Utility Pole 11) Brick Bldg Cor. Arbor Woods Club House 12) Brick Bldg Cor. Arbor Woods Club House	N65W N69E S17W S29W	68.62' to nail & R.T. 81.89' to nail & R.T. 112.70' to nail & R.T. 130.82' to nail & R.T.
---	---	------------------------------	--

SURVEY &
 REMONUMENTATION
 MAY 05 1997
 COMMISSION

It is our opinion that this corner represents the original corner and is accepted as the best available evidence of the position of the original corner.

Signed by [Signature] Date DEC 02 1996
 Surveyor's Michigan License No. 20712

APPROVED
 DATE 9/23/96
 CO. REP. [Signature]

COPY

1/22/1959	W. J. Armstrong (Atwell-Hicks)	Compiled Surveys Dwg. #242-53	Unrecorded	3) SE Cor. Cult. H'dwl 4) SW Cor. W. Cult. H'dwl 5) Twin 4" B. Walnut	S3 1/2W S49W S75W	15.8' 24.5" 119.5'
1/10/1991	Michael L. Milletics 29249	Unknown	Fnd. 2" Pinch Pipe	6) PK Nail in P. Pole 7) PK Nail in 8" Crabapple 8) PK Nail in 8" Walnut	N SE WSW	26.16' 36.49' 118.58'

nail W. side
nail NE. side
nail W. side