

SECTION

LAND CORNER RECORDATION CERTIFICATE
Filing Requirement of Act 74, Mich. P.A. 1970

For corners in

WASHTENAW
(County)

Located In: YPSILANTI TOWNSHIP

Corner Code #

- 1. Public Land Survey T 3 S R 7 E
2. Property controlling in Section S T R
3. Miscellaneous Property in Sec. S T R

E-13
Barcode
5094785
Page: 1 of 1
02/07/2000 02:55P
Peggy M. Haines - Washtenaw Co. CORREM L-3 P-79
Register of Deeds Stamp & File Number

- 4. Lot No. , Recorded Plot
5. Private Claims

I, CHRISTOPHER S. LAMUS, in a field survey on NOVEMBER 28, 1999, do hereby certify that under requirements of P.A. 74, Michigan P.A. of 1970, the corner points mentioned in lines 1 and 2 above were in conformance with regulations and rules therefore as required in the current manual of survey instructions of the United States Department of the Interior, Bureau of Land Management or by decree of a Court of Law and/or that the corner points mentioned in lines 3, 4 and 5 above were in conformance with the rules of the Michigan Board of Land Surveyors or by Decree of a Court of Law; established, reestablished, monumented, re-monumented, recovered, found as expressed below:

NOTE: Not more than 4 corners, all in the same town and range, may be recorded on this certificate

Grid table with columns A-M and rows 1-13. A dot is marked at the intersection of column G and row 13.

A. Description of original monument and accessories and/or subsequent restoration:

ORIG. GOVERNMENT NOTES 1819
WITNESSED BY JOSEPH WAMPLER - SET POST
1) POPLAR 24" S78'E 34 LINKS
2) SUGAR 18" S75'W 34 LINKS
NO G.L.O. WITNESSES REMAIN

W.C.R.C. FIELD NOTES TAKEN IN 1975 BY UNKNOWN
6) 22" OAK N75'E 89.5'
7) P. POLE N40'E 83.9'
10) T. POLE S58'W 35.4'
12) AUGUSTA TWP SECTION CORNER COMMON TO SECTION 4 & 5 WEST 292.0'

W.J. ARMSTRONG 1935+/-
1 1/2" IRON PIPE WITH BRICKS AND STONES
3) 15" TWIN ELM N34'E 40.5'
4) 30" ELM N62'E 55.0'
5) 6" ASH N10'E 103.3'
6) 14" ASH N75'E 89.4'

P.A. 74 THADDEUS A. WOZNIAK # 15066 -L.B, P.269 -1998
FOUND 2" IRON PIPE
6) P.K. NAIL SOUTH SIDE 20" OAK N80'E 89.06'
7) P.K. NAIL SOUTHWEST FACE OF U. POLE N45'E 84.26'
8) P.K. NAIL NORTH SIDE OF 12" BOX ELDER S80'E 87.90'
13) NORTHWEST CORNER OF CONCRETE PAD S45'E 46.59'

P.A. 74 ROBERT JAGOW L.2, P.497 -1973
FOUND IRON PIPE. FOUND ONE WITNESS
TREE AND STUMPS OF THREE OTHERS.

- 1 1/2" IRON PIPE
6) 18" ASH N77'E 89.4'
7) POWER POLE N38'E 84.2'
8) 3" ASH S75'E 88.2'
9) 2" MAPLE S18'W 14.7'
10) POWER POLE S52'W 35.9'
11) 12" OAK N2'W 241.5'

B. Description of corner evidence and/or method applied in restoring or reestablishing corner:

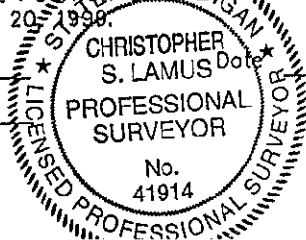
FOUND 1 1/2" IRON PIPE SURROUNDED WITH BRICKS WITH 1/2" BENT STEEL BAR INSIDE. 5" BELOW GRAVEL SURFACE AT CENTERLINE-CENTERLINE INTERSECTION OF BEMIS AND HITCHINGHAM ROADS. NOTE: 1/2" IRON BAR IS LEANING 0.41' SOUTHERLY AND TOP OF BRICK IS 18" BELOW GRAVEL SURFACE. DROVE 3/4" IRON PIPE OVER 1 1/2" IRON PIPE AND SET REMON CAP.

C. Description of monument for corner and accessories established to perpetuate locating the position of the corner:

- 3/4" IRON PIPE WITH ALUMINUM REMONUMENTATION CAP STAMPED #41914.
11) FOUND P.K. NAIL & WASHER #14864 IN S.E. SIDE OF 30" MAPLE N5'W 240.75' (241.4' TO CENTER)
14) AUGUSTA TWP SECTION CORNER COMMON TO SECTIONS 4 & 5 WEST 291.78'
15) SET REMON TAG OVER FOUND P.K. NAIL & WASHER #14864 IN NORTH FACE OF 16" BOX ELDER S80'E 87.90'
18) N.W. CORNER OF CONCRETE PAD S45'E 46.76'
19) FOUND P.K. NAIL & RIBBON IN SOUTH FACE OF 29" OAK N74'E 89.06'.
20) SET REMON TAG OVER FOUND NAIL & DISC (OHM KSW #21584) S.E. FACE OF POWER POLE N35'E 84.42'.
21) FOUND NAIL & DISC (OHM KSW #21584) N.W. SIDE OF 12" OAK N59'E 65.99'.
22) SET REMON TAG OVER FOUND NAIL & DISC (OHM KSW #21584) NORTH FACE OF 12" MAPLE S54'E 58.76'.
23) SET REMON TAG OVER FOUND NAIL & DISC (OHM KSW #21584) S.W. SIDE OF 18" MAPLE N20'W 132.03".

I CONCLUDE AFTER CAREFUL STUDY OF THE RECORD DOCUMENTATION AND FIELD OBSERVATIONS, THAT THIS CORNER IS ACCEPTED AS THE BEST AVAILABLE EVIDENCE OF THE POSITION OF THE ORIGINAL CORNER. THIS POINT WAS RATIFIED BY THE WASHTENAW COUNTY PEER COMMITTEE ON DECEMBER 20, 1999.

Signed by Christopher S. Lamus
Surveyor's Michigan License No. 41914



Date 12/21/99

APPROVED DATE 12/20/99