

MAY 10 2000

SECTION

LAND CORNER RECORDATION CERTIFICATE
Filing Requirement of Act 74, Mich. P.A. 1970

For corners in

WASHTENAW (County) Located In: YPSILANTI TOWNSHIP Corner Code # H-9

1. Public Land Survey T 3 S R 7E

2. Property controlling in Section S T R

3. Miscellaneous Property in Sec. S T R

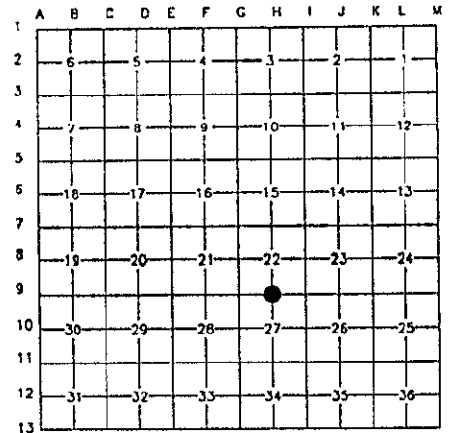
4. Lot No. _____, Recorded Plat _____

5. Private Claims _____

5094794
Page: 1 of 1
02/07/2000 02:55P
L-3 P-88

Peggy M. Haines - Washtenaw Co. CORREM

Register of Deeds Stamp & File Number



I, CHRISTOPHER S. LAMUS, in a field survey on DECEMBER 5, 1999, do hereby certify that under requirements of P.A. 74, Michigan P.A. of 1970, the corner points mentioned in lines 1 and 2 above were in conformance with regulations and rules therefore as required in the current manual of survey instructions of the United States Department of the Interior, Bureau of Land Management or by decree of a Court of Law and/or that the corner points mentioned in lines 3, 4 and 5 above were in conformance with the rules of the Michigan Board of Land Surveyors or by Decree of a Court of Law; established, reestablished, monumented, re-monumented, recovered, found as expressed below:

NOTE: Not more than 4 corners, all in the same town and range, may be recorded on this certificate

A. Description of original monument and accessories and/or subsequent restoration:

ORIG. GOVERNMENT NOTES 1819.
WITNESSED BY JOSEPH WAMPLER - SET POST
1) ASH 19" S51°W 3 LINKS
2) ASH 5" N14°E 14 LINKS
NO G.L.O. WITNESSES REMAIN

W.C.R.C. FIELD NOTES WITNESSES BY J.F.
MARZENE DATE: UNKNOWN. NO DESCRIPTION
3) 10" W. OAK N10°W 26.5'
4) 30" ELM S40°E 43.4'
5) 18" ELM S70°W 47.0'

P.A. 74 L.7, P.324 BY THADDEUS A. WOZNIAK
#15066 11/18/92
FOUND BOAT SPIKE IN ASPHALT
6) SOUTH END OF CHAIN LINK FENCE NORTH 62.35'
7) FOUND CHISELED 'X' WEST SIDE OF CONC. RETAINING WALL N80°E 50.20'
8) FOUND P.K. NAIL IN NW SIDE OF 24" WALNUT S75°W 95.05'
9) FOUND P.K. NAIL IN WEST SIDE OF U. POLE SOUTH 52.66'

B. Description of corner evidence and/or method applied in restoring or reestablishing corner:

FOUND NAIL & DISC AT ROAD SURFACE. DUG 3" FOUND 6" BOAT SPIKE. OFFSET & REMOVED NO READINGS. SET MON BOX AND 1" IRON PIPE WITH REMON CAP 6' NORTH OF CENTERLINE OF ROAD.

C. Description of monument for corner and accessories established to perpetuate locating the position of the corner:

SET 1" IRON PIPE AS ABOVE SET ALUMINUM REMONUMENTATION CAP STAMPED #41914
6) TOP OF SOUTH END OF CHAIN LINK FENCE NORTH 62.21'
7) FOUND CHISELED 'X' WEST SIDE OF NORTH CONC. RETAINING WALL N80°E 50.25'
8) SET REMON TAG OVER FOUND P.K. NAIL IN NW SIDE OF 24" WALNUT S75°W 95.05'
9) SET REMON TAG OVER FOUND P.K. NAIL IN WEST SIDE OF U. POLE S7°E 52.70'
10) FOUND CHISELED 'X' ON WEST SIDE OF SOUTH CONC. RETAINING WALL S72°E 54.62'
11) SET MAG NAIL & REMON WASH. CO. REMON TAG IN SOUTHWEST SIDE OF 16" N40°W 69.02'
12) SET REMON TAG IN WEST SIDE OF 5" ASH N40°E 53.63'

I CONCLUDE AFTER CAREFUL STUDY OF THE RECORD DOCUMENTATION AND FIELD OBSERVATIONS, THAT THIS CORNER IS ACCEPTED AS THE BEST AVAILABLE EVIDENCE OF THE POSITION OF THE ORIGINAL CORNER. THIS POINT WAS RATIFIED BY THE WASHTENAW COUNTY PEER COMMITTEE ON DECEMBER 20, 1999.

Signed by Christopher S. Lamus
Surveyor's Michigan License No. 41914



12/21/99

APPROVED
DATE 12/20/99
CO. REP. Kg