

SURVEY & REMONUMENTATION

MAY - 1 1995

LAND CORNER RECORDATION CERTIFICATE Filing Requirement of Act 74, Mich. P.A. 1970

COMMISSION

For corners in

WASHTENAW
(County)

Located In:

Corner Code #

1. Public Land Survey		T	4S	R	6E		I-9
		T		R			
		T		R			
		T		R			
2. Property Controlling in Section	S	T		R			
	S	T		R			
3. Miscellaneous Property in Sec.	S	T		R			
	S	T		R			

4. Lot No. _____, Recorded Plat _____
5. Private Claims _____

I, Patrick Hastings, in a field survey on December 22, 19 93, do hereby certify that under requirements of P.A. 74, Michigan P.A. of 1970, the corner points mentioned in lines 1 and 2 above were in conformance with regulations and rules therefore as required in the current manual of survey instructions of the United States Department of the Interior, Bureau of Land Management or by a decree of a Court of Law and/or that the corner points mentioned in lines 3, 4 and 5 above were in conformance with the rules of the Michigan Board of Land Surveyors or by a Decree of a Court of Law; established, re-established, monumented, re-monumented, recovered, found as expressed below:

NOTE: Not more than 4 corners, all in the same town and range, may be recorded on this certificate.

A. Description of original monument and accessories and/or subsequent restoration:

- 1819 G.L.O., Set post by Ash 12" dia. bearing S 12° E 22 lks; Sugar 8" bearing N 77° W 23 lks.
- 1934 W.C.R.C., W.J. Armstrong; Found a large bone set on edge and close beside it an old wood stake. Around this we found stones, broken chinaware, nails, and 2 bolts. Reset with iron pipe, stones and bricks.
 - (1) N 1 1/2° W 430.3' Elm 14"
 - (2) N 37° E 145.3' Burr Oak 5"
 - (3) S 67° E 114.8' End Post R.R. R/W

CONTINUED ON BACK

B. Description of corner evidence found and/or method applied in restoring or reestablishing corner:

- 1993 At intersection of Platt Rd. and Willow Rd: Found 1/2" iron pipe in mon. box, 1' west of painted yellow line and on the occupational centerline of Willow Road. Dug down 15" and found top of 1" iron pipe.

REMAINING WITNESSES

- (5) S 88° E 147.3' Centerline of RR Xing midway between tracks
- (13) S 34° E 47.8' E. end 48" C.M.P. to chiseled square
- (14) N 45° E 66.03' to found nail N.W. side of T. pole
- (15) S 45° W 50.88' to P.K. nail set W. end 48" C.M.P.

C. Description of monument for corner and accessories established to perpetuate locating the position of the corner:

After a careful study of the record documentation and field observations, made under my direct supervision, I find this corner monument to be a perpetuation of the position of the original corner.

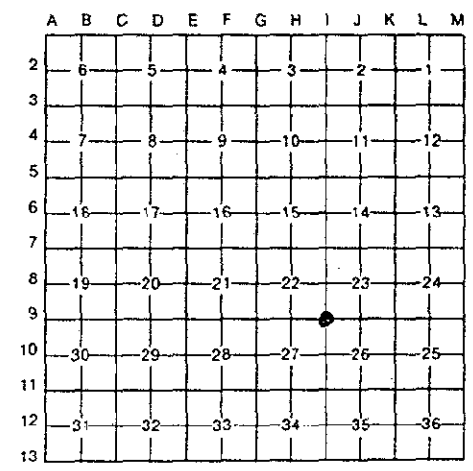
Set 3/4" iron pipe and standard remon. cap stamped #37277 in top of 1" iron pipe.

- 1993 (5) S 88° E 147.3' Centerline of RR Xing midway between tracks
- (13) S 34° E 47.8' E. end 48" C.M.P. to chiseled square
- (14) N 45° E 66.03' to found nail N.W. side of T. pole
- (15) S 45° W 50.88' to P.K. nail set W. end 48" C.M.P.
- (16) S 55° E 41.80' to found P.K. in W. face power pole

igned by Patrick L. Hastings
urveyor's Michigan License No. 37277

Date 6/27/94

RECORDED
 WASHTENAW COUNTY, MI
 SEP 21 11 17 AM '94
 PEGGY M. HAINES
 COUNTY CLERK/REGISTER
 LIBER 1 PAGE 41Rm
 Register of Deeds Stamp & File Number



STATE OF MICHIGAN
 PATRICK L. HASTINGS
 PROFESSIONAL SURVEYOR
 No. 37277
 FORM APPROVED BY MICHIGAN STATE BOARD OF LAND SURVEYORS, JAN 1971
 REVISED MAR 1975
 REVISED JAN 1983

SECTION 'A' CONTINUED

1934	(4)	N 76° E	101.3'	End Post R.R. R/W
	(5)	S 88° E	147.3'	Centerline R.R. Xing midway between tracks
No date				
Survey by Washtenaw Engineering, corner found				
1972	(6)	N 60° W	60.2'	Survey by A.H., Inc., Found 1" iron pipe in mon box
	(7)	N 70° E	90.2'	R/W iron
	(8)	S 60° E	53.6'	Power pole
	(9)	S 60° W	54.8'	Power pole
1975	(6)			Survey by A.H., Inc., Found 1" iron pipe in mon box
	(7)			
	(8)			
	(9)			
1981				LCRC by Washtenaw Engineering, N.N. Fahrner
1-21-81				L.6, p. 102; found 1" iron pipe raised with 1/2" iron pipe
*	(1)	N 02° W	430.3'	Elm 14"
	(3)	S 67° E	114.8'	End Post R.R. R/W
	(4)	N 76° E	101.3'	End Post R.R. R/W
	(10)	S 45° E	49.0'	Power pole
	(11)	S 35° W	47.0'	W. end 48" C.M.P.
1981				LCRC by R.A. Campbell, L6, P 87; found 1/2" iron pipe, Cap #24620
1-22-81				near road surface and drive into 1 1/2" iron pipe 15" below surface,
				surrounded by bricks.
*	(5)	East	147.1'	Centerline of R.R. Xing midway between tracks
	(12)	S 45° E	49.13'	to found nail S.W. side Power pole
	(13)	S 34° E	47.75'	E. end 48" C.M.P. to chiseled square
				Set monument box at road surface
	(14)	N 45° E	66.03'	to found nail N.W. side of T. pole
	(15)	S 45° W	50.88'	to P.K. nail, set. W. end 48" C.M.P.
1981				Survey by Washtenaw Engineering - witnesses agree with L.C.R.C.
2-3-81				dated 1-21-81.

*deviation from previous witness information

APPROVED
DATE 2/8/94
CO. REP. MA