

REN

2000

SECTION

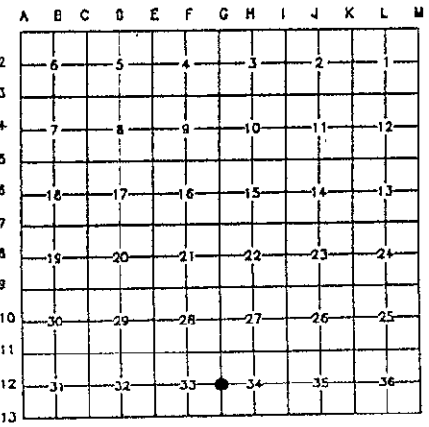
LAND CORNER RECORDATION CERTIFICATE
Filing Requirement of Act 74, Mich. P.A. 1970

For corners in

Form with fields for County (WASHTENAW), Located In (T 4S R 7E), Corner Code # (G-12), and numbered items 1-5 describing the survey and claims.

Barcode area containing the number 5094711, page information (Page: 1 of 2, 02/07/2000 02:55P), and the name Peggy M. Haines - Washtenaw Co. CORREM L-2 P-296.

Handwritten signature 'Copy' and the text 'Register of Deeds Stamp & File Number'.



I, LORI E. BEYER, in a field survey on NOVEMBER 20, 1999, do hereby certify that under requirements of P.A. 74, Michigan P.A. of 1970, the corner points mentioned in lines 1 and 2 above were in conformance with regulations and rules therefore as required in the current manual of survey instructions of the United States Department of the Interior, Bureau of Land Management or by decree of a Court of Law and/or that the corner points mentioned in lines 3, 4 and 5 above were in conformance with the rules of the Michigan Board of Land Surveyors or by Decree of a Court of Law; established, re-established, monumented, re-monumented, recovered, found as expressed below:

1999 REMONUMENTATION CORNER

- A. Description of original monument and accessories and/or subsequent restoration: G.L.O. - JOSEPH FRANCIS - 1819 SET POST 14" ASH S 86° E 25 LINKS 15" BEECH S 84° W 50 LINKS

Continued on Back

- B. Description of corner evidence and/or method applied in restoring or reestablishing corner: FOUND 3/4" IRON PIPE WITH WCRC CAP #13028 AT ROAD SURFACE OF WHITTAKER ROAD. CHECKED WITNESSES. RESET WITH 3/4" x 24" IRON PIPE WITH ALUMINUM REMON. CAP STAMPED '41092' IN MONUMENT BOX.

- C. Description of monument for corner and accessories established to perpetuate locating the position of the corner: 3/4" x 24" IRON PIPE WITH ALUMINUM REMON. CAP STAMPED '41092' IN MONUMENT BOX.

Table with 3 columns: Monument Description, W'LY, and Distance. Includes items like SW COR CONC HEADWALL (23.2'), NE COR CONC HEADWALL (9.6'), SW COR CONC HEADWALL (8.4'), E. EDGE OF PAVEMENT (6.6'), W. EDGE OF PAVEMENT (17.7'), UTILITY POLE (30.55'), FIRE HYDRANT (59.23'), and 8"-12" MULTI BOXELDER (44.65').

SET NAIL/TAG SOUTH SIDE TOP NUT SET NAIL/TAG NORTH SIDE



AFTER CAREFUL EXAMINATION OF RECORD DOCUMENTATION AND FIELD OBSERVATIONS, I BELIEVE THIS POINT SHOULD BE ACCEPTED AS THE BEST AVAILABLE EVIDENCE OF THE POSITION OF THE ORIGINAL CORNER.

THIS CORNER WAS RATIFIED BY THE PEER REVIEW COMMITTEE ON NOVEMBER 22, 1999.

Signed by Lori E. Beyer Surveyor's Michigan License No. 41092

Date DEC 03, 1999 APPROVED DATE 11/22/99 CO. REP. [Signature]

SECTION

G-12 CONTINUED FROM PARAGRAPH A



5094711  
Page: 2 of 2  
02/07/2000 02:55P  
L-2 P-297

Peggy M. Haines - Washtenaw Co. CORREM

S. PETTIBONE - DATE UNKNOWN

- A) 18" BEECH
- B) 15" W. ASH

S 22° W	.35 CHAINS
N 21° W	.37 CHAINS

*Copy*

WASHTENAW COUNTY GRID BOOK - NO WITNESSES POSTED - NO ARMSTRONG NOTES FOUND

L.C.R.C. LIBER 3 PAGE 495 - GLENN RICHARD #13040 - APRIL 1974

FOUND 3/4" IRON PIPE IN PAVEMENT FROM W.C.R.C. WITNESSES BELOW

- |                         |         |        |
|-------------------------|---------|--------|
| 1) NW COR CONC HEADWALL | N 80° W | 23.25' |
| 2) SW COR CONC HEADWALL | S 85° W | 23.10' |
| 3) NW COR CONC HEADWALL | N 60° E | 9.68'  |
| 4) SW COR CONC HEADWALL | S 75° E | 8.40'  |

L.C.R.C. LIBER 6 PAGE 97 - NORMAN F. FAHRNER # 17620 - APRIL 1981

FOUND 1/2" IRON PIPE

- |                         |         |        |         |
|-------------------------|---------|--------|---------|
| 5) POWER POLE           | S 20° W | 89.43' | TO NAIL |
| 2) SW COR CONC HEADWALL | W'LY    | 23.27' |         |
| 3) NE COR CONC HEADWALL | N 45° E | 9.65'  |         |
| 4) SW COR CONC HEADWALL | S 80° E | 8.40'  |         |

L.C.R.C. LIBER 7 PAGE 71 - ROBERT CAMPBELL JR #13028 - JUNE 1984

FOUND 1/2" IRON PIPE AT ROAD SURFACE. PULLED AND FOUND NOTHING BELOW. RESET WITH 3/4" x 18" IRON PIPE AND CAP AFTER RECONSTRUCTION OF WHITTAKER RD. AT ROAD SURFACE.

- |                         |         |        |         |
|-------------------------|---------|--------|---------|
| 5) POWER POLE           | S 20° W | 89.43' | TO NAIL |
| 2) SW COR CONC HEADWALL | W'LY    | 23.27' |         |
| 3) NE COR CONC HEADWALL | N 45° E | 9.65'  |         |
| 4) SW COR CONC HEADWALL | S 80° E | 8.40'  |         |
| 6) E. EDGE OF PAVEMENT  | EAST    | 6.6'   |         |
| 7) W. EDGE OF PAVEMENT  | WEST    | 17.7'  |         |

P.A. 132 CERTIFICATE OF SURVEY - LIBER 3294 PAGE 841 - JOHN BLANCHARD #27446 - APRIL 1996

P.A. 132 CERTIFICATE OF SURVEY - LIBER 3383 PAGE 208 - JOHN BLANCHARD #27446 - APRIL 1996

MONUMENT NOT DESCRIBED - NO WITNESSES POSTED